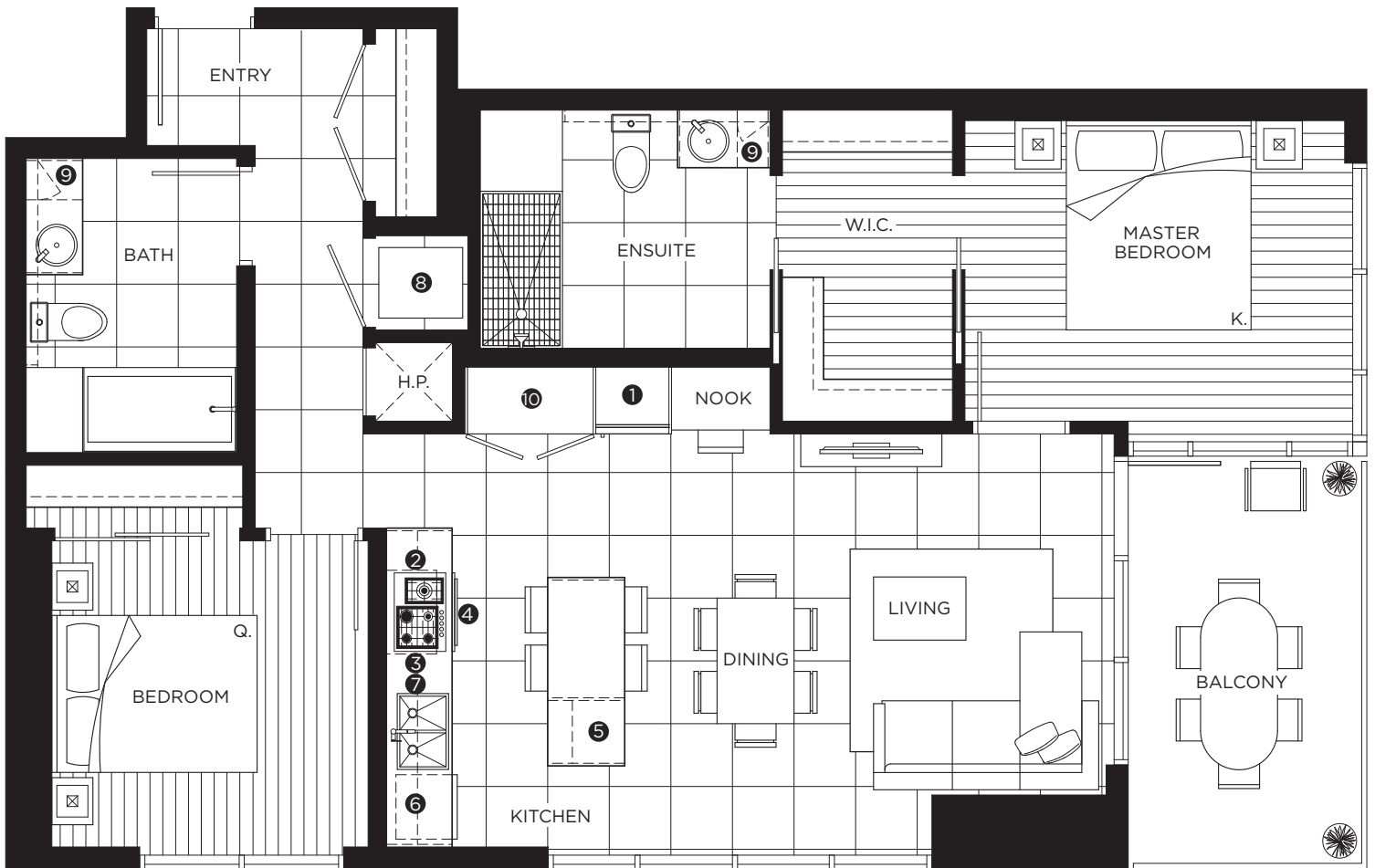


## TWO BEDROOM SUITE

INDOOR AREA <b>961 SQ FT</b>	OUTDOOR AREA <b>96 SQ FT</b>
TOTAL AREA <b>1,057 SQ FT</b>	



### FEATURE LIST:

- |                             |  |
|-----------------------------|--|
| 1. 24" Integrated Fridge    | 6. Integrated Dishwasher                             |
| 2. 4 Burner Gas Cooktop     | 7. Push Button Sink Disposal                         |
| 3. Ducted Hood Fan          | 8. High-Efficiency Full Size Ducted Washer and Dryer |
| 4. Convection Built in Oven | 9. Hidden Medicine Cabinet                           |
| 5. Microwave                | 10. Pantry   |

The developer reserves the right to make minor modifications to suite and furniture layout, specifications and floor plans should they be necessary to maintain the high standards of this community. Square footage are based on preliminary measurements and are approximate. E & O.E.

## TWO BEDROOM SUITE

INDOOR AREA <b>979 SQ FT</b>	OUTDOOR AREA <b>217 SQ FT</b>
TOTAL AREA <b>1,196 SQ FT</b>	



### FEATURE LIST:

- |                             |   |
|-----------------------------|---|
| 1. 30" Integrated Fridge    | 6. Integrated Dishwasher                          |
| 2. 4 Burner Gas Cooktop     | 7. Push Button Sink Disposal                      |
| 3. Ducted Hood Fan          | 8. High-Eciency Full Size Ducted Washer and Dryer |
| 4. Convection Built in Oven | 9. Hidden Medicine Cabinet                        |
| 5. Microwave                | 10. Pantry  |

The developer reserves the right to make minor modifications to suite and furniture layout, specifications and floor plans should they be necessary to maintain the high standards of this community. Square footage are based on preliminary measurements and are approximate. E & O.E.

## TWO BEDROOM SUITE

INDOOR AREA <b>1,002 SQ FT</b>	OUTDOOR AREA <b>141 SQ FT</b>
TOTAL AREA <b>1,143 SQ FT</b>	



### FEATURE LIST:

- |                             |   |
|-----------------------------|---|
| 1. 24" Integrated Fridge    | 6. Integrated Dishwasher                          |
| 2. 4 Burner Gas Cooktop     | 7. Push Button Sink Disposal                      |
| 3. Ducted Hood Fan          | 8. High-Eciency Full Size Ducted Washer and Dryer |
| 4. Convection Built in Oven | 9. Hidden Medicine Cabinet                        |
| 5. Microwave                | 10. Pantry  |

The developer reserves the right to make minor modifications to suite and furniture layout, specifications and floor plans should they be necessary to maintain the high standards of this community. Square footage are based on preliminary measurements and are approximate. E & O.E.

## TWO BEDROOM SUITE

INDOOR AREA <b>1,032 SQ FT</b>	OUTDOOR AREA <b>146 SQ FT</b>
TOTAL AREA <b>1,178 SQ FT</b>	



### FEATURE LIST:

- |                             |   |
|-----------------------------|---|
| 1. 30" Integrated Fridge    | 6. Integrated Dishwasher                          |
| 2. 4 Burner Gas Cooktop     | 7. Push Button Sink Disposal                      |
| 3. Ducted Hood Fan          | 8. High-Eciency Full Size Ducted Washer and Dryer |
| 4. Convection Built in Oven | 9. Hidden Medicine Cabinet                        |
| 5. Microwave                | 10. Pantry  |

The developer reserves the right to make minor modifications to suite and furniture layout, specifications and floor plans should they be necessary to maintain the high standards of this community. Square footage are based on preliminary measurements and are approximate. E & O.E.

## TWO BEDROOM SUITE + DEN

INDOOR AREA <b>1,367 SQ FT</b>	OUTDOOR AREA <b>217 SQ FT</b>
TOTAL AREA <b>1,584 SQ FT</b>	

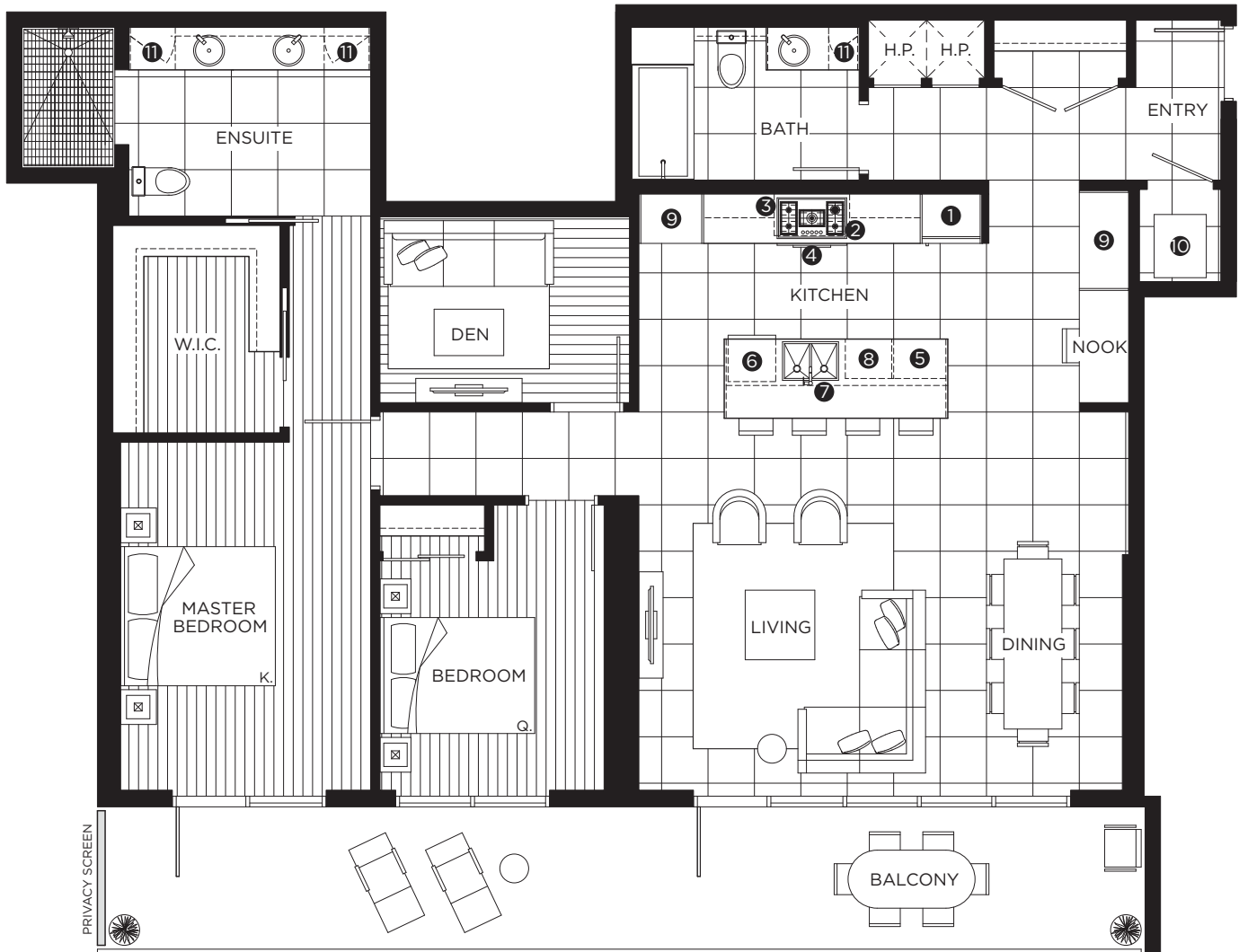


- |                             |   |
|-----------------------------|---|
| 1. 30" Integrated Fridge    | 6. Integrated Dishwasher                          |
| 2. 5 Burner Gas Cooktop     | 7. Push Button Sink Disposal                      |
| 3. Ducted Hood Fan          | 8. Undercounter Wine Fridge                       |
| 4. Convection Built in Oven | 9. High-Eciency Full Size Ducted Washer and Dryer |
| 5. Microwave                | 10. Hidden Medicine Cabinet                       |

The developer reserves the right to make minor modifications to suite and furniture layout, specifications and floor plans should they be necessary to maintain the high standards of this community. Square footage are based on preliminary measurements and are approximate. E & O.E.

## TWO BEDROOM SUITE + DEN

INDOOR AREA <b>1,486 SQ FT</b>	OUTDOOR AREA <b>217 SQ FT</b>
TOTAL AREA <b>1,757 SQ FT</b>	



### FEATURE LIST:

- |                             |  |
|-----------------------------|--|
| 1. 30" Integrated Fridge    | 7. Push Button Sink Disposal                       |
| 2. 5 Burner Gas Cooktop     | 8. Undercounter Wine Fridge                        |
| 3. Ducted Hood Fan          | 9. Pantry  |
| 4. Convection Built in Oven | 10. High-Eciency Full Size Ducted Washer and Dryer |
| 5. Microwave                | 11. Hidden Medicine Cabinet                        |
| 6. Integrated Dishwasher    |  |

The developer reserves the right to make minor modifications to suite and furniture layout, specifications and floor plans should they be necessary to maintain the high standards of this community. Square footage are based on preliminary measurements and are approximate. E & O.E.

## TWO BEDROOM SUITE + DEN

INDOOR AREA	OUTDOOR AREA
<b>1,515 SQ FT</b>	<b>190 SQ FT</b>
TOTAL AREA	
<b>1,705 SQ FT</b>	



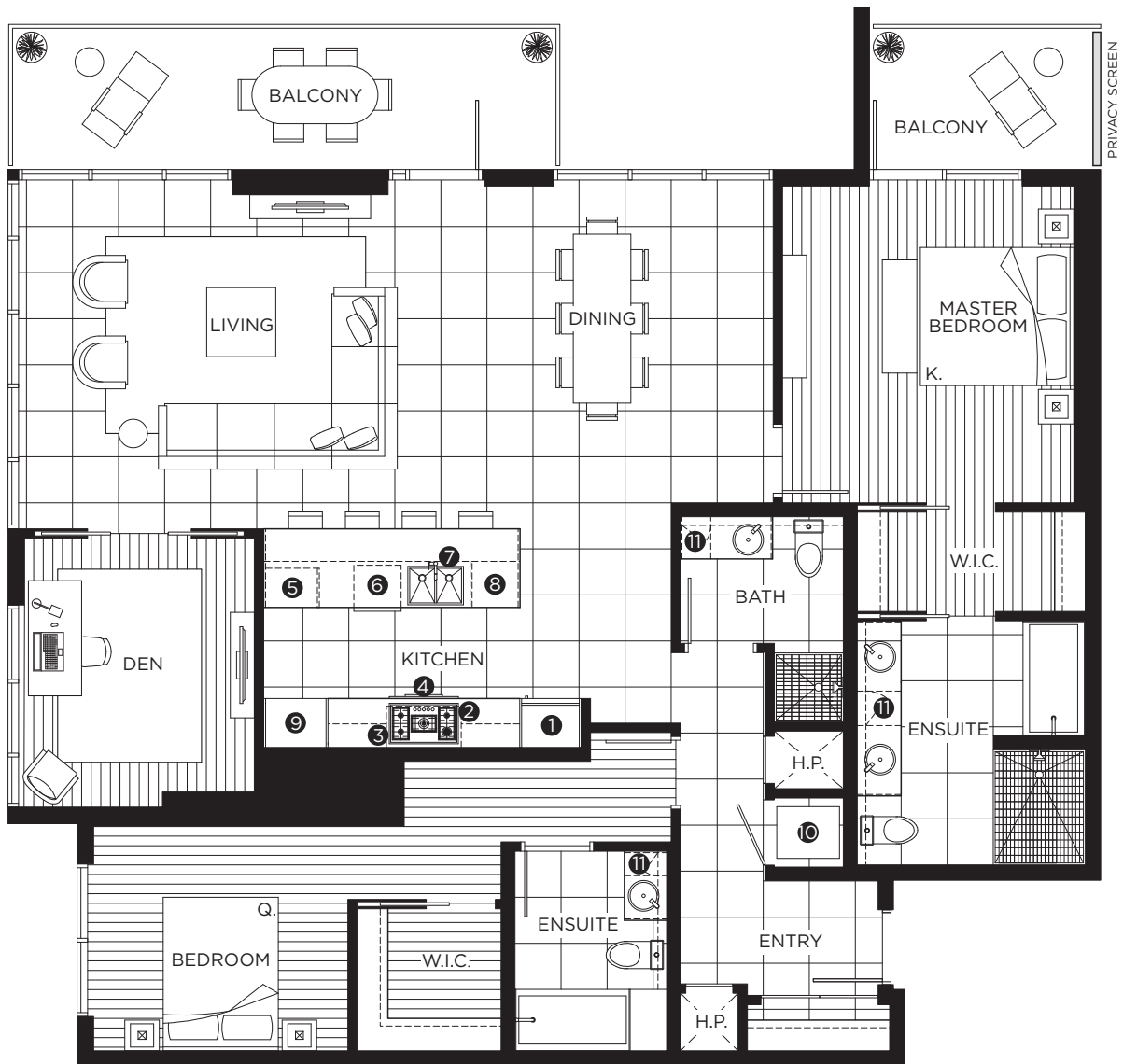
### FEATURE LIST:

- |                             |  |
|-----------------------------|--|
| 1. 30" Integrated Fridge    | 7. Push Button Sink Disposal                       |
| 2. 5 Burner Gas Cooktop     | 8. Undercounter Wine Fridge                        |
| 3. Ducted Hood Fan          | 9. Pantry  |
| 4. Convection Built in Oven | 10. High-Eciency Full Size Ducted Washer and Dryer |
| 5. Microwave                | 11. Hidden Medicine Cabinet                        |
| 6. Integrated Dishwasher    |  |

The developer reserves the right to make minor modifications to suite and furniture layout, specifications and floor plans should they be necessary to maintain the high standards of this community. Square footage are based on preliminary measurements and are approximate. E & O.E.

## TWO BEDROOM SUITE + DEN

INDOOR AREA	OUTDOOR AREA
<b>1,677 SQ FT</b>	<b>199 SQ FT</b>
TOTAL AREA	
<b>1,876 SQ FT</b>	



### FEATURE LIST:

1. 30" Integrated Fridge
2. 5 Burner Gas Cooktop
3. Ducted Hood Fan
4. Convection Built in Oven
5. Microwave
6. Integrated Dishwasher
7. Push Button Sink Disposal
8. Undercounter Wine Fridge
9. Pantry
10. High-Eciency Full Size Ducted Washer and Dryer
11. Hidden Medicine Cabinet

The developer reserves the right to make minor modifications to suite and furniture layout, specifications and floor plans should they be necessary to maintain the high standards of this community. Square footage are based on preliminary measurements and are approximate. E & O.E.