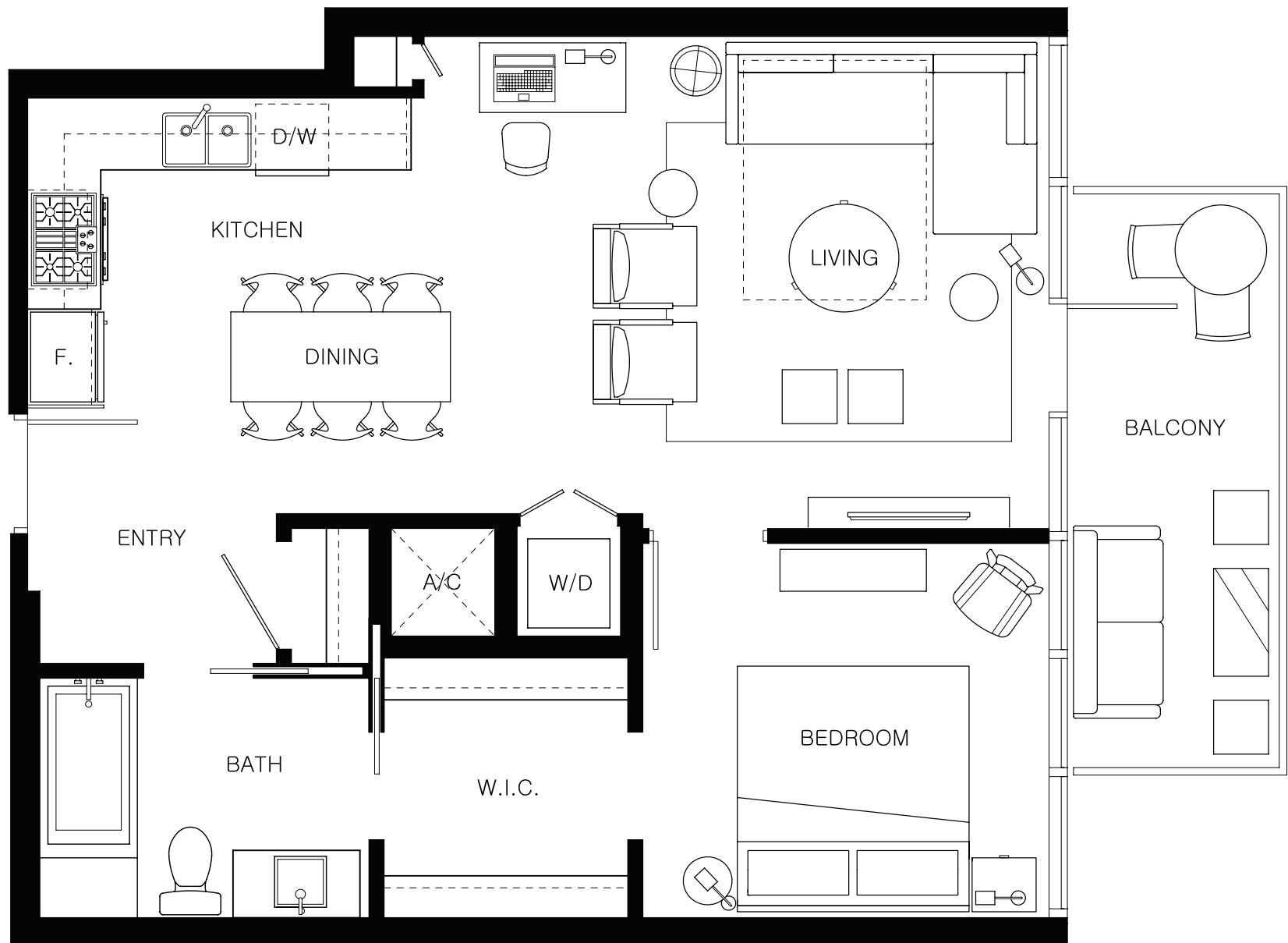


ONE BEDROOM SUITE

LIVING 710 SQ FT



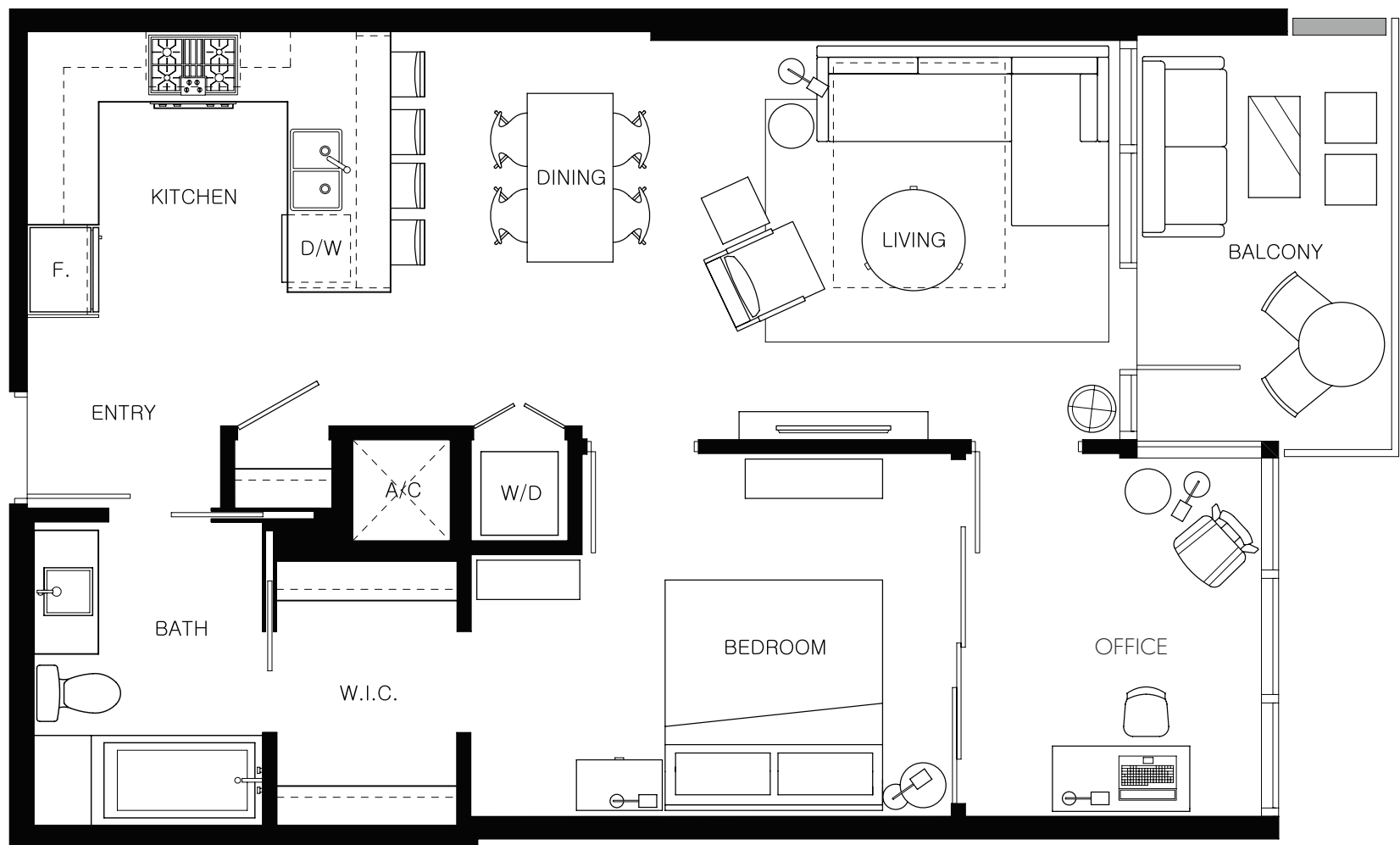
The developer reserves the right to make minor modifications to suite and furniture layout, specifications and floor plans should they be necessary to maintain the high standards of this community. Square footage are based on preliminary measurements and are approximate. E & O.E.

level

LOS ANGELES  
Downtown - South Olive

## ONE BEDROOM SUITE & OFFICE

LIVING 830 SQ FT



The developer reserves the right to make minor modifications to suite and furniture layout, specifications and floor plans should they be necessary to maintain the high standards of this community. Square footage are based on preliminary measurements and are approximate. E & O.E.

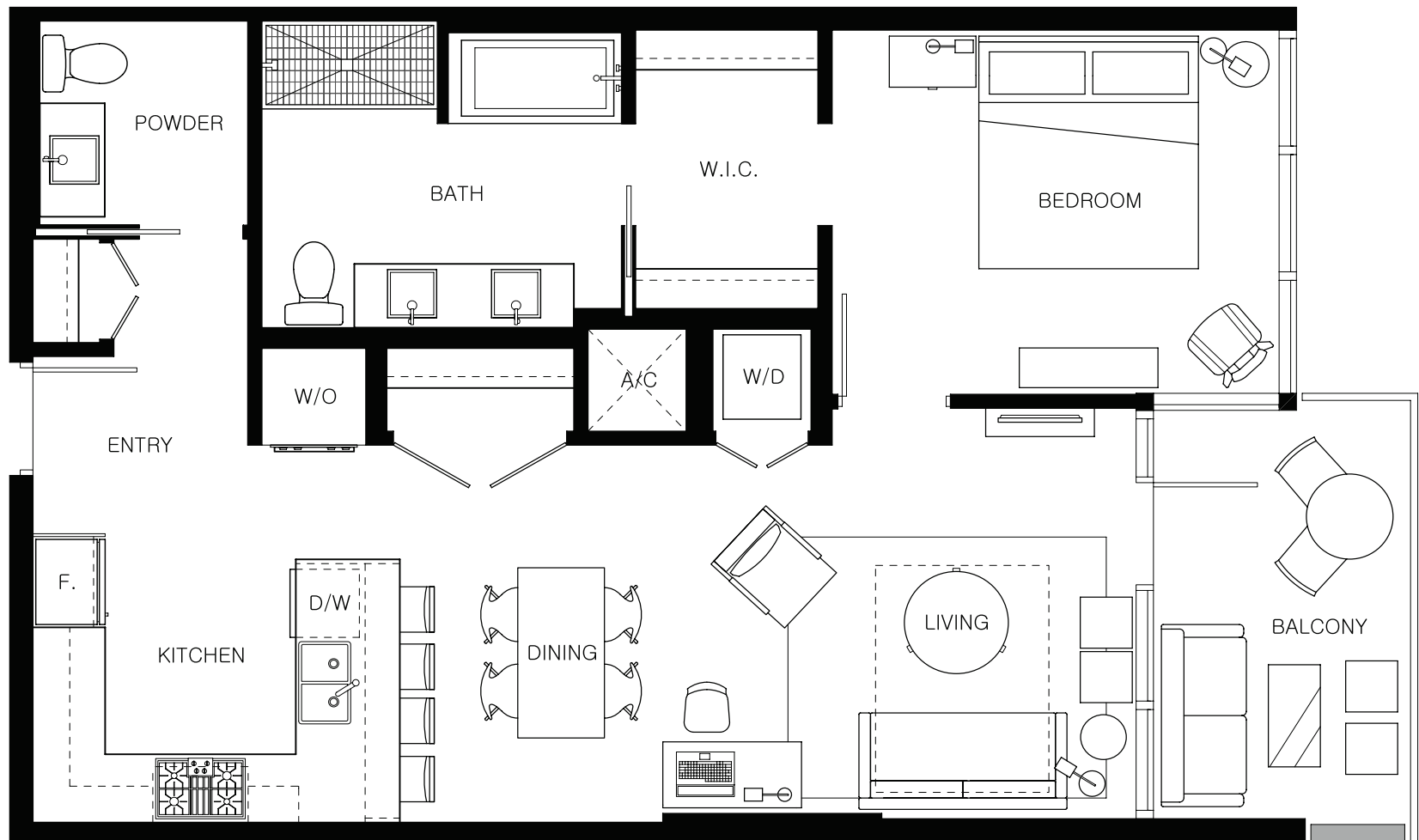
level

LOS ANGELES  
Downtown - South Olive

# ONE BEDROOM SUITE

(ADA Available)

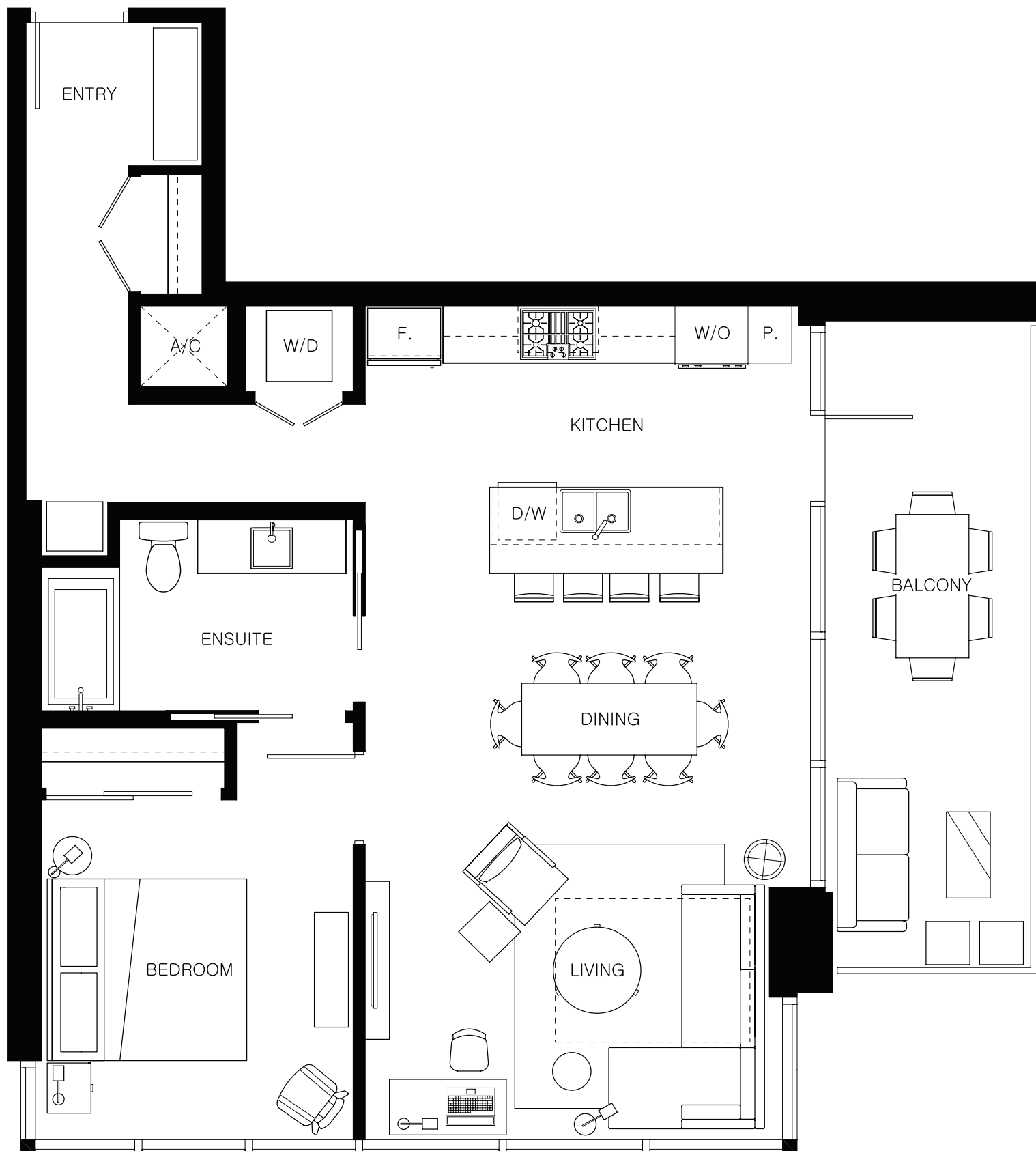
LIVING 835 SQ FT



The developer reserves the right to make minor modifications to suite and furniture layout, specifications and floor plans should they be necessary to maintain the high standards of this community. Square footage are based on preliminary measurements and are approximate. E & O.E.

## ONE BEDROOM CORNER SUITE

LIVING 870 SQ FT



The developer reserves the right to make minor modifications to suite and furniture layout, specifications and floor plans should they be necessary to maintain the high standards of this community. Square footage are based on preliminary measurements and are approximate. E & O.E.