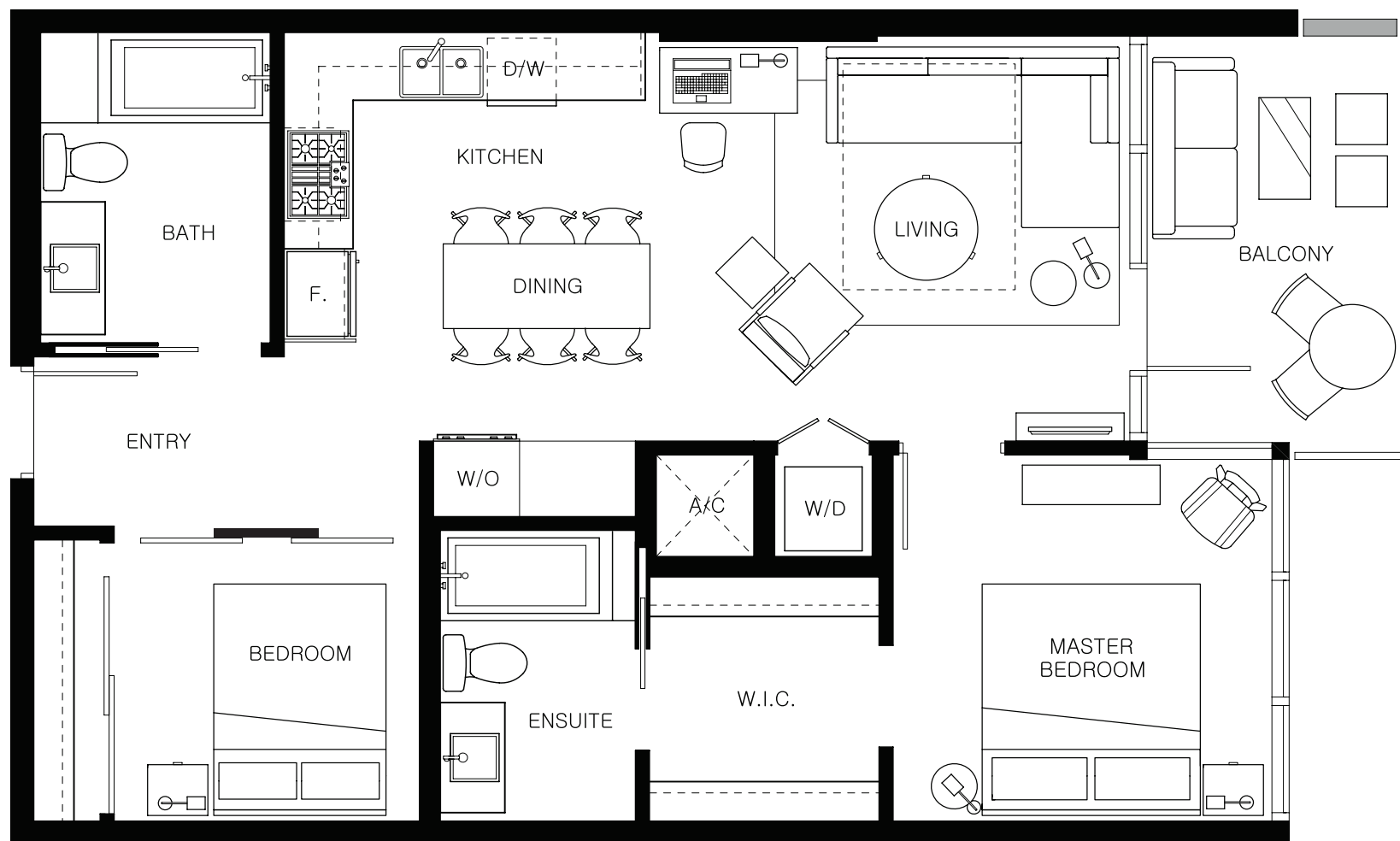


level

LOS ANGELES
Downtown - South Olive

JUNIOR TWO BEDROOM SUITE

LIVING 850 SQ FT



The developer reserves the right to make minor modifications to suite and furniture layout, specifications and floor plans should they be necessary to maintain the high standards of this community. Square footage are based on preliminary measurements and are approximate. E & O.E.

TWO BEDROOM SUITE

LIVING 930 SQ FT



The developer reserves the right to make minor modifications to suite and furniture layout, specifications and floor plans should they be necessary to maintain the high standards of this community. Square footage are based on preliminary measurements and are approximate. E & O.E.

TWO BEDROOM SUITE

LIVING 1,000 SQ FT



The developer reserves the right to make minor modifications to suite and furniture layout, specifications and floor plans should they be necessary to maintain the high standards of this community. Square footage are based on preliminary measurements and are approximate. E & O.E.

level

LOS ANGELES
Downtown - South Olive

TWO BEDROOM SKY SUITE

LIVING 1,220 SQ FT



The developer reserves the right to make minor modifications to suite and furniture layout, specifications and floor plans should they be necessary to maintain the high standards of this community. Square footage are based on preliminary measurements and are approximate. E & O.E.