

level

HOTELS &
FURNISHED
SUITES

Stay a night or stay a while, **stay Level.**

stayinglevel.com





The comforts of home, the thrill of travel.

Nestled in the heart of vibrant urban destinations, Level Hotels & Furnished Suites offers the comfort of spacious, residential-style accommodations complemented by unrivaled lifestyle amenities and dedicated service, creating your personal sanctuary in the city.

A LITTLE ABOUT US

Designed, built, owned and operated by Onni Group, Level Hotels & Furnished Suites boasts a collection of nightly and extended stay properties across Chicago, Los Angeles, Seattle and Vancouver.



CHANGE THE WAY YOU STAY

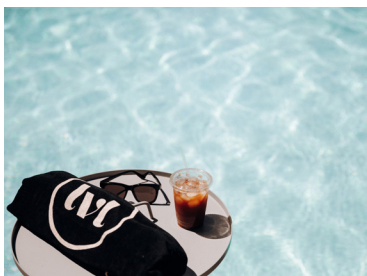
- Forget cramped hotel rooms. When you stay with Level Hotels & Furnished Suites you can expect spacious suites that range in size from 409 - 2,100sqft depending on location. Plus:
 - Full kitchens with premium appliances
 - The convenience of in-suite laundry
 - The option of studio, one, two or three bedroom layouts
 - Pet-friendly accommodations & amenities
 - Housekeeping services
 - 24hr onsite guest services
- Each property features a unique collection of unrivaled lifestyle amenities; think basketball & sports courts, pet spas, private theatres, rooftop pools, sprawling fitness centers, and entertaining spaces with chef's kitchens.

LOCATION, LOCATION, LOCATION

- We've carefully selected locations with walkable neighborhoods close some of the city's best dining, nightlife, shopping & attractions.
- **Chicago** | Level Fulton Market (*extended*), Level Old Town (*nightly & extended*), Level River North (*nightly & extended*)
- **California** | Level South Olive (*nightly & extended*), Level Flower (*extended*), Level South Hill (*extended*), Level Long Beach (*extended*), Level Hollywood (*extended*)
- **Vancouver** | Level Seymour (*nightly & extended*), Level Richards (*extended*), Level Howe (*extended*)
- **Seattle** | Level South Lake Union (*nightly & extended*)

THE PENTHOUSE COLLECTION

- A prestigious portfolio of luxury accommodations boasting sweeping panoramic cityscape views and expansive living spaces with design-forward interiors and striking outdoor space.
- The Penthouse at Level South Hill is Los Angeles' largest penthouse at just over 19,000 sqft and features airy 18ft floor-to-ceiling windows, five bedrooms plus private service staff quarters, a private fitness studio, and rooftop pool with expansive views.



STORY STARTERS

Space to live & play? That's pretty suite.

When you're away from home, you want a space to call your own. Far exceeding the size of an average hotel suite, Level's furnished, design-forward suites act like your own apartment in the city. Each suite comes with fully-equipped kitchens, functional living areas, and convenient in-suite laundry. Enjoy the assistance of onsite 24hr guest services to help with things like arranging groceries prior to your arrival or recommending local attractions. With access to a range of on-property amenities like pools, fitness centers, sports courts and dog runs, you have the ability to stick to your cherished routines while discovering new adventures.

2023 Openings

This year Level will expand their portfolio in California and Chicago with properties opening in Long Beach, Hollywood and Fulton Market. Each available for extended stays of 30+ nights, the new locations are positioned in sought-after walkable neighborhoods and promise a luxurious home-away-from-home experience with spacious, modern apartments, onsite 24hr guest services and a collection of unique lifestyle amenities that include pet spas, theatre rooms, sports courts and resort-style rooftop pools.

From a rooftop basketball court in DTLA to Seattle's only hotel with 3 pools and a karaoke room, Level Hotels & Furnished Suites is changing the way you stay.

Each of Level's properties have been designed with a unique collection of resort-inspired amenities designed with you in mind, allowing you to do the things you love no matter your location. Spend the day exploring Vancouver by bike and finish off with a poolside snooze. Follow a game of pick-up on a rooftop court with a memorable night on the town. Kickstart your day in DTLA with a yoga class before virtual meetings in the co-work space. Enjoy a family games night in the kids' lounge and then post-bedtime parents' time on your private balcony. Pick up farm-fresh items at the local market for an al fresco dinner on the terrace, followed by a lively karaoke session.

Luxury penthouses to level up your next vacation or private event.

A prestigious portfolio of seven luxury accommodations in Chicago, Los Angeles, Seattle, and Vancouver. Available for nightly, monthly or annual stays as well private events or filming, each penthouse boasts sweeping panoramic cityscape views and expansive living spaces ranging from 6,400 to over 19,000 sqft. These sprawling rooftop residences blend elegant, design-forward interiors with striking outdoor spaces to deliver unparalleled stay experiences in the heart of the city.

Family travel made easy.

From packing extra outfits in anticipation of mess to figuring out how to have adult time after the kids go to bed, family travel takes planning. Pack (a little) lighter knowing all properties offer the option of cribs, diaper pails, high chairs and the convenience of in-suite laundry. Bedroom doors that close? That's pretty suite. After a day of family fun in the city, enjoy spaces designed with your little ones in mind. From pool time and outdoor play areas to indoor family lounges and board games, there is room for the whole family when you stay Level.

LEEDing the way

As a LEED Certified property, perhaps the most unique feature of Level Seattle is the use of district energy. Helmed by Onni's Capilano Energy division, a state-of-the-art district energy development was designed and integrated onsite. A central energy plant produces heating, cooling and domestic hot water that is distributed to each building. The system provides reliable services to the property while reducing greenhouse gas emissions by up to 70% - that's about 420 tons of carbon emissions per year or equivalent to removing 95 cars from the road per year!

Additional green features? Thermostats in the suites provide guests the option to opt-in to the hotel's sustainability program. With the simple touch of the Green ecoMode button, guests can activate the thermostat's enhanced energy-saving mode. Each suite also features power-smart lighting systems, energy-efficient washer & dryers, and a new line of bathroom amenities with the introduction of Malin & Goetz's collection of clean, cruelty-free skincare products. For those guests driving electric vehicles, the property's onsite parking garage also offers electric charging stations.



MEDIA CONTACTS

Kate Francois, Director of Hospitality Marketing, Onni Group
kfrancois@onni.com

The Brand Agency
level@thebrand-agency.com

FIND US ON SOCIAL
[@stayinglevel](#) [@lvlpenthousecollection](#)
[#ChangeTheWayYouStay](#)