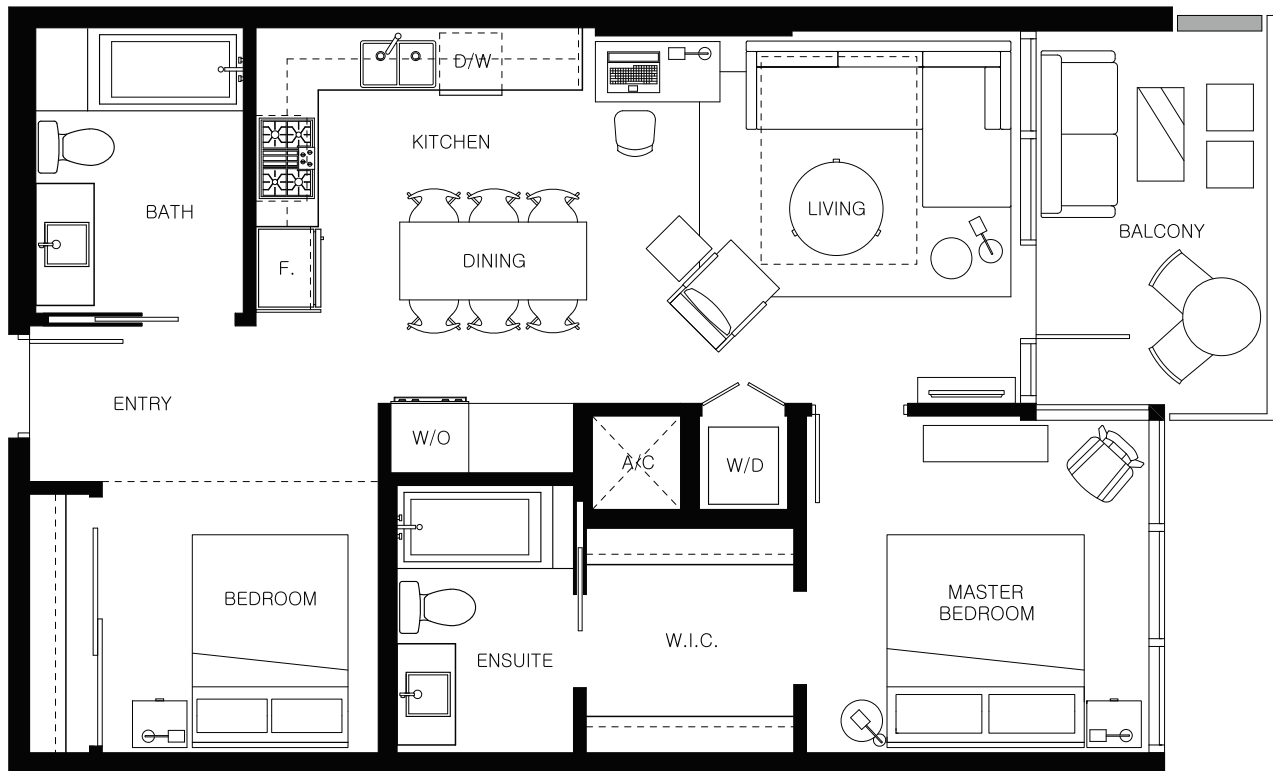


## EXECUTIVE 2 BEDROOM SUITE

LIVING 850 SQ FT



The developer reserves the right to make minor modifications to suite and furniture layout, specifications and floor plans should they be necessary to maintain the high standards of this community. Square footage are based on preliminary measurements and are approximate. E & O.E.

## 2 BEDROOM SUITE

LIVING 930 SQ FT



The developer reserves the right to make minor modifications to suite and furniture layout, specifications and floor plans should they be necessary to maintain the high standards of this community. Square footage are based on preliminary measurements and are approximate. E & O.E.

level

LOS ANGELES  
Downtown - South Olive

2 BEDROOM SUITE

LIVING 1,000 SQ FT



The developer reserves the right to make minor modifications to suite and furniture layout, specifications and floor plans should they be necessary to maintain the high standards of this community. Square footage are based on preliminary measurements and are approximate. E & O.E.

## EXECUTIVE 2 BEDROOM SUITE

LIVING 1,010 SQ FT



The developer reserves the right to make minor modifications to suite and furniture layout, specifications and floor plans should they be necessary to maintain the high standards of this community. Square footage are based on preliminary measurements and are approximate. E & O.E.

## DELUXE EXECUTIVE 2 BEDROOM SUITE

LIVING 1,220 SQ FT



The developer reserves the right to make minor modifications to suite and furniture layout, specifications and floor plans should they be necessary to maintain the high standards of this community. Square footage are based on preliminary measurements and are approximate. E & O.E.