



# level

HOTELS & FURNISHED SUITES



## The Comforts of Home, the Thrill of Travel

Nestled in the heart of vibrant urban destinations, Level Hotels & Furnished Suites offers the comfort of spacious, residential-style accommodations complemented by unrivaled lifestyle amenities and dedicated service, creating your personal sanctuary in the city. Stay a night or stay a while, stay Level.





2009

**LEVEL YALETOWN - SEYMOUR**  
Level opens its first property in Vancouver in 2009 preceding the 2010 Winter Olympics.



2015

**LEVEL DOWNTOWN SOUTH OLIVE**  
Level opens its first hotel property and first location in the United States. Situated in the heart of downtown Los Angeles.



2018

**LEVEL YALETOWN - RICHARDS**  
The brand's second Vancouver location opens as an extended stay property in the False Creek area, just steps from the seawall.



2018

**LEVEL OLD TOWN**  
Level expands to Chicago, opening its first hotel location in the city's sought-after Old Town neighborhood.



2020

**LEVEL DOWNTOWN FLOWER**  
The brand's third location in the South Park neighborhood of DTLA opens near LA Live and A-list restaurants.



2021

**LEVEL RIVER NORTH**  
The company rebrands from LEVEL Furnished Living to Level Hotels & Furnished Suites with a new look to better reflect their growing brand. Chicago's second location opens in the buzzing River North neighborhood.



2022

**LEVEL DOWNTOWN - HOWE**  
Level expands again to open a third Vancouver location in the city's scenic Beach District, making them the largest extended stay provider in the city.



2022

**LEVEL SOUTH LAKE UNION**  
The brand opens its first hotel location in Seattle in of the city's trendiest and most walkable neighborhoods, South Lake Union.



2023

**LEVEL LONG BEACH**  
In spring of 2023, Long Beach became home to Level's fourth property in California. This waterfront property embodies the laid-back appeal of a coastal town.



2023

**LEVEL FULTON MARKET**  
Level's third property in Chicago opens in Fulton Market, nearby the West Loop neighborhood, offering maximum convenience for working professionals.



2023

**LEVEL HOLLYWOOD**  
Level's fifth hotel in California opens in Hollywood, and provides a direct sightline of the iconic Hollywood sign.



2024

**LEVEL RICHMOND + PORT MOODY**  
The newest hotels in the Level portfolio, both located in Greater Vancouver. More specifically, Richmond, BC, and Port Moody, BC.





## Space to Live and Play

When you're away from home, you want a space to call your own. Level's suites are designed with you in mind. Fully furnished, our spacious, design-forward apartments boast fully-equipped kitchens, functional living areas, convenient in-suite laundry and many feature private patios or balconies. All of our properties are pet-friendly and, with options for studio, one, two and three bedroom accommodations, you have the flexibility to select space that suits your lifestyle. With us for an extended stay? Complimentary bi-weekly housekeeping is included at each of our properties.





## Elevate Your Stay to New Heights

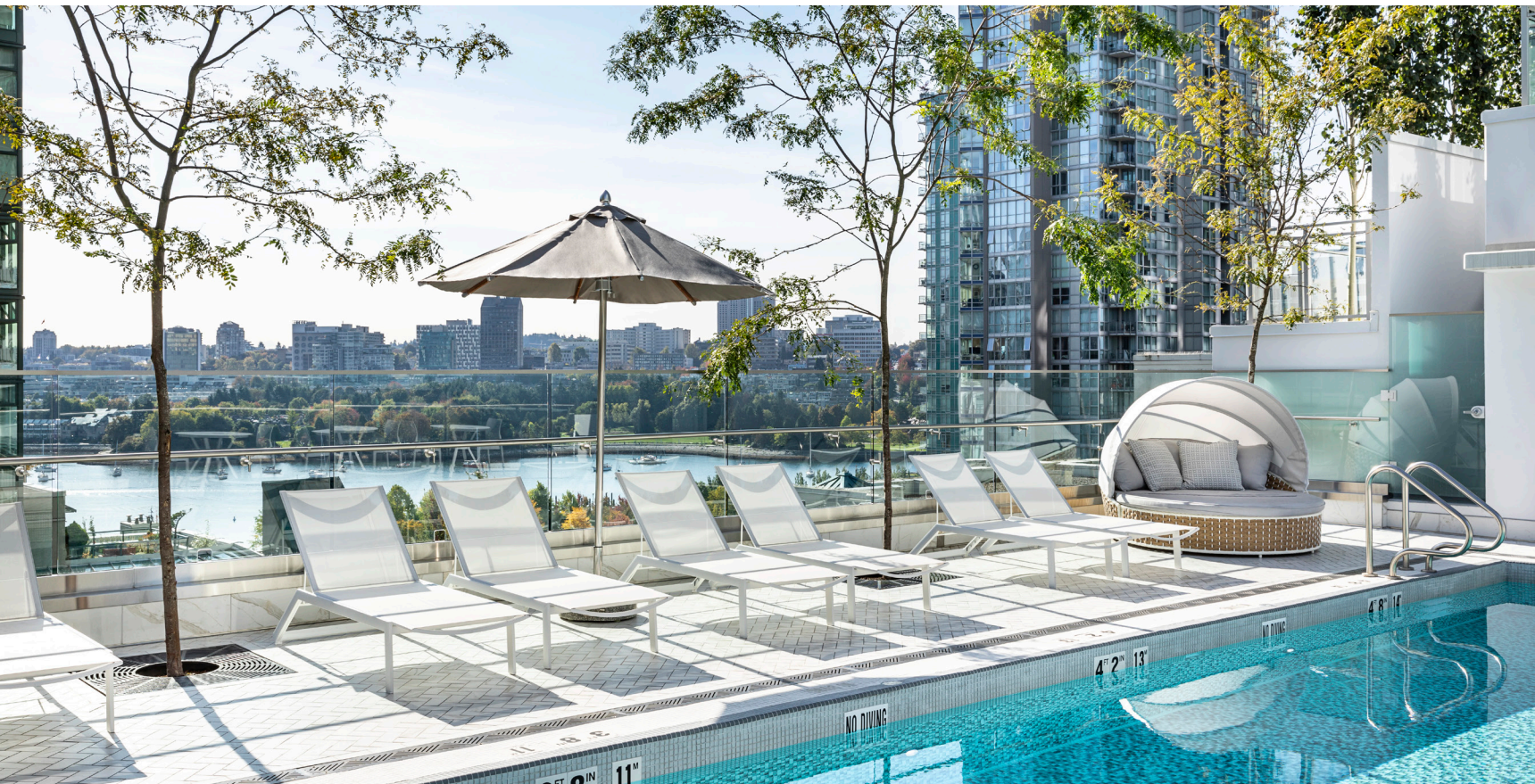
Nestled in the heart of lively urban neighborhoods in Chicago, Los Angeles, Seattle and Vancouver, you'll find the best of the city just beyond your doorstep.

level destinations





# — DOWNTOWN VANCOUVER



## Welcome to Downtown Vancouver

Maybe it's the top-tier restaurants, local boutiques or nightlife, or maybe it's the stunning sunsets, expansive coastline or North Shore mountains. Whether you love energetic urban centers or restorative natural spaces, Vancouver delivers. With three downtown Vancouver locations, Level guests can take advantage of their proximity to some of the city's coolest neighborhoods.

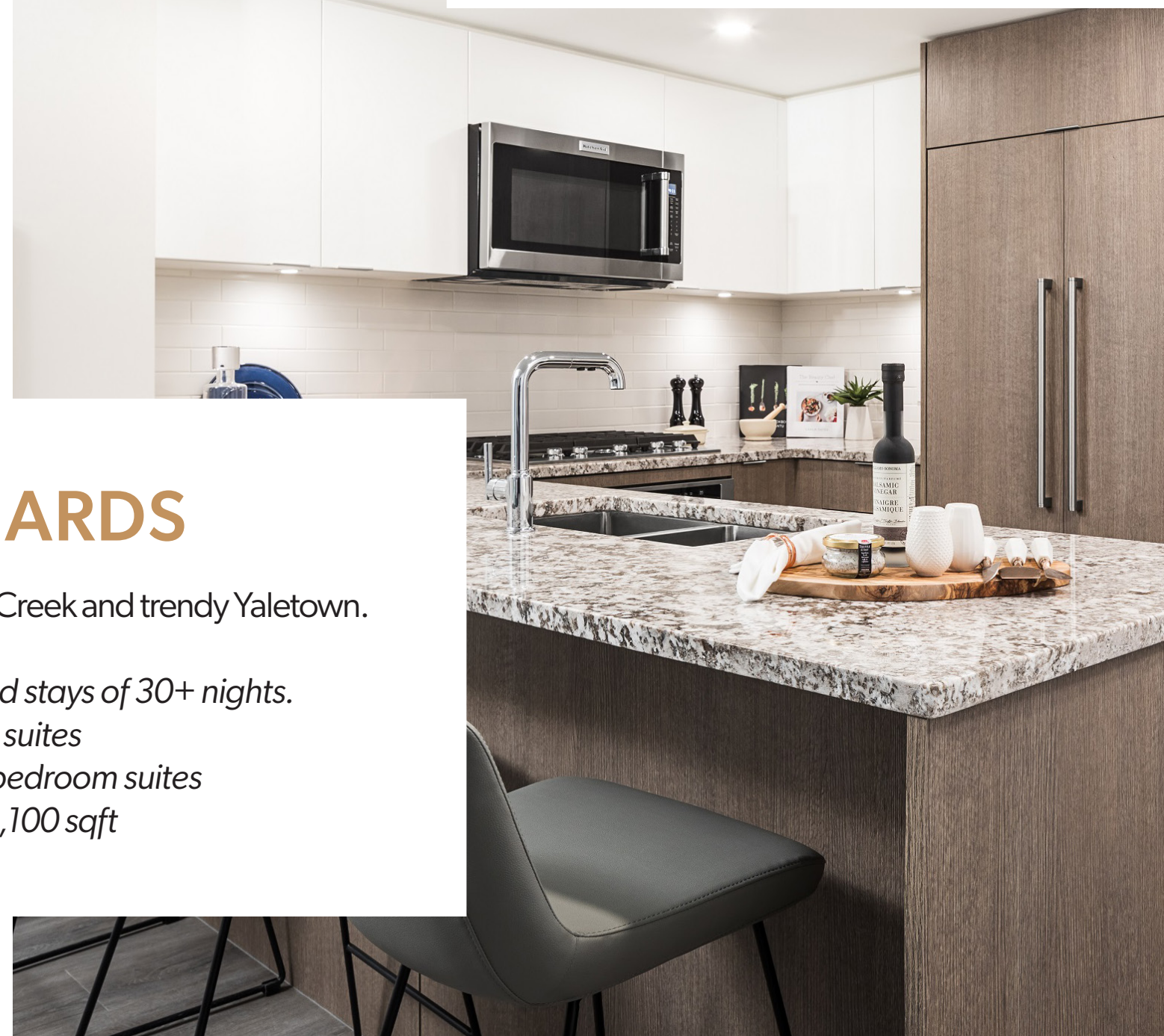
— level destinations



### SEYMOUR

Located in Vancouver's trendy Yaletown neighborhood.

*Welcomes nightly & extended stays.*  
187 suites & 1 penthouse  
Studio, one or two bedroom suites  
and two bedroom townhomes  
500 - 1,200 sqft



### RICHARDS

Located steps from False Creek and trendy Yaletown.

*Welcomes extended stays of 30+ nights.*  
133 suites  
One or two bedroom suites  
475 - 1,100 sqft

### HOWE

Located in Vancouver's Beach District neighborhood.

*Welcomes extended stays of 30+ nights.*  
112 suites  
Studio, one, two or three bedroom suites  
409 - 1,072 sqft





## — GREATER VANCOUVER



### RICHMOND

Located close to Vancouver International Airport.

*Welcomes extended stays of 30+ nights.*

*25 suites*

*One, two or three bedroom suites*

*575 - 1,060 sqft*

## Welcome to Greater Vancouver

Maybe it's the charming parks, vibrant local markets, or the lively cultural scene, or maybe it's the breathtaking ocean views, lush forests, or nearby mountain trails. Whether you love the serene coastal charm of Port Moody or the dynamic, multicultural atmosphere of Richmond, Greater Vancouver offers it all. With convenient access to both of these unique areas, Level guests can enjoy the best of both worlds – the tranquility of nature and the excitement of urban life.

level destinations

### PORT MOODY

Located in idyllic Port Moody.

*Welcomes extended stays of 30+ nights.*

*26 suites*

*One, two or three bedroom suites*

*522 - 900 sqft*





# — LOS ANGELES



## Welcome to Los Angeles

In the city of angels, discover two Level locations conveniently situated in the heart of downtown LA's South Park neighborhood and a new Level property opening in Hollywood 2023. While in downtown LA, you'll be within walking distance to some of the city's best restaurants, entertainment, and nightlife. Catch a game at LA Live or explore the latest contemporary art exhibit at The Broad Museum.

— level destinations

## FLOWER

Located in DTLA's South Park neighborhood

*Welcomes extended stays of 30+ nights.*  
35 suites  
Studio, one, two or three bedroom suites  
505 - 1,000 sqft



## SOUTH OLIVE

Located in DTLA's South Park neighborhood.

*Welcomes nightly & extended stays.*  
302 suites & 1 penthouse  
One, two or three bedroom suites  
and two or three bedroom sky suites  
710 - 2,100 sqft



## HOLLYWOOD

Located on Santa Monica Blvd in Hollywood.

*Welcomes extended stays.*  
36 suites  
Studio, one and two bedroom suites  
570 - 1,250 sqft



## — LONG BEACH



## Welcome to Long Beach

Designed for long stays that won't feel that way, Level Long Beach's collection of modern one and two-bedroom pet-friendly suites feature spacious living areas, fully-equipped kitchens, and convenient in-suite laundry. Enjoy 24-hr guest services and access to our amenities, including outdoor pool for year-round swimming, private theater, state-of-the-art two-story fitness center and co-working space.

— level destinations

## LONG BEACH

Located in downtown Long Beach.

*Welcomes extended stays of 30+ nights.*

*32 suites*

*One or two bedroom suites*

*709 - 1,149 sqft*





# — CHICAGO



## FULTON MARKET

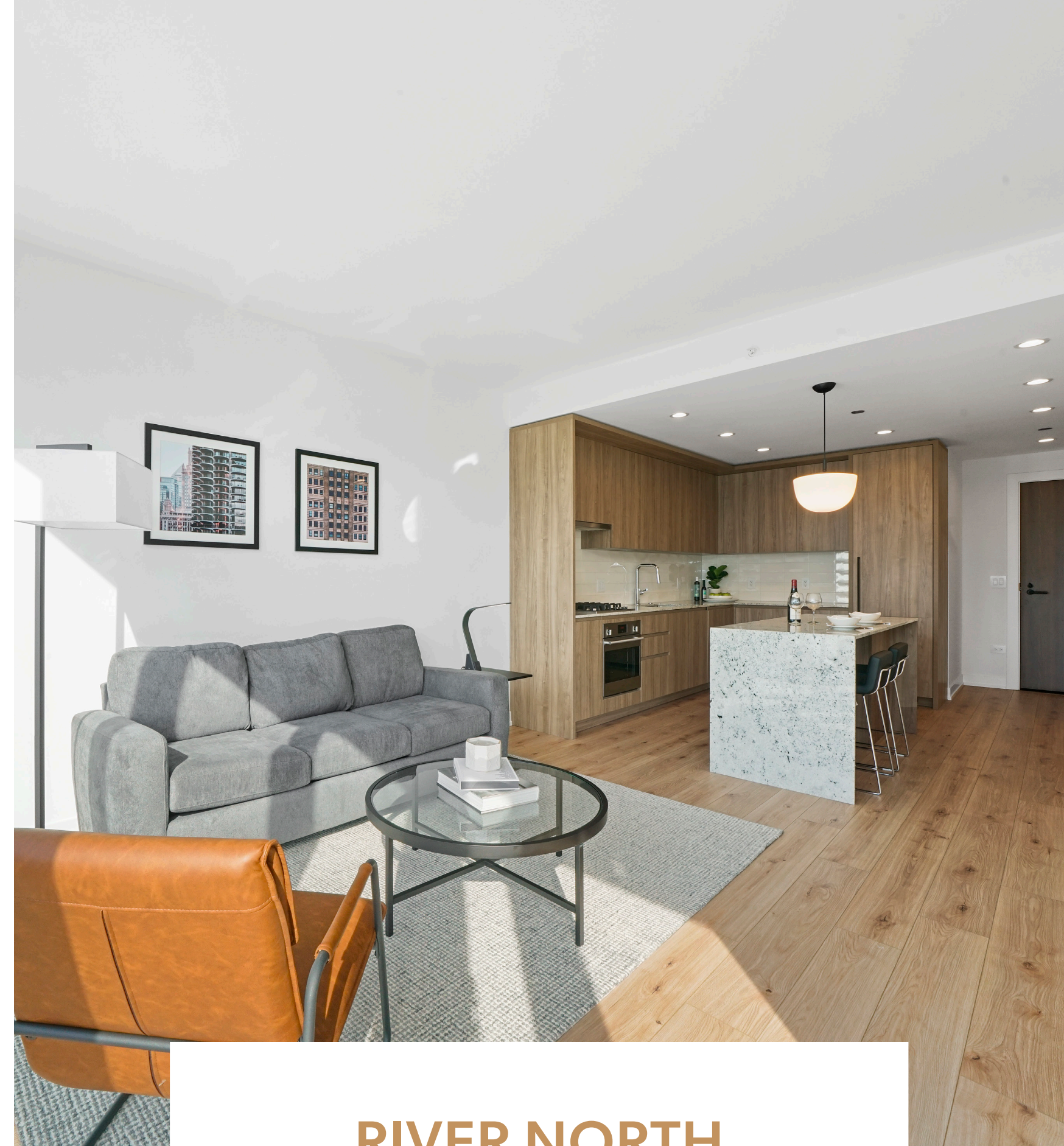
Located in Chicago's Fulton Market neighborhood.

*Welcomes nightly & extended stays.*

*56 suites*

*Studio, one, two or three bedroom suites*

*500 - 1,200 sqft*



## RIVER NORTH

Located in Chicago's River North neighborhood.

*Welcomes nightly & extended stays.*

*99 suites & 1 penthouse*

*Studio, one or two bedroom suites*

*550 - 1,217 sqft*

## Welcome to Chicago

Welcome to Chicago, a city overflowing with captivating culture, legendary entertainment, iconic sights, and award-winning restaurants. With locations in three of the city's most sought-after neighborhoods - Old Town, River North and Fulton Market - you'll find everyday conveniences, access to transit, celebrated dining and boutiques, all only a stone's throw away.

— level destinations

## OLD TOWN

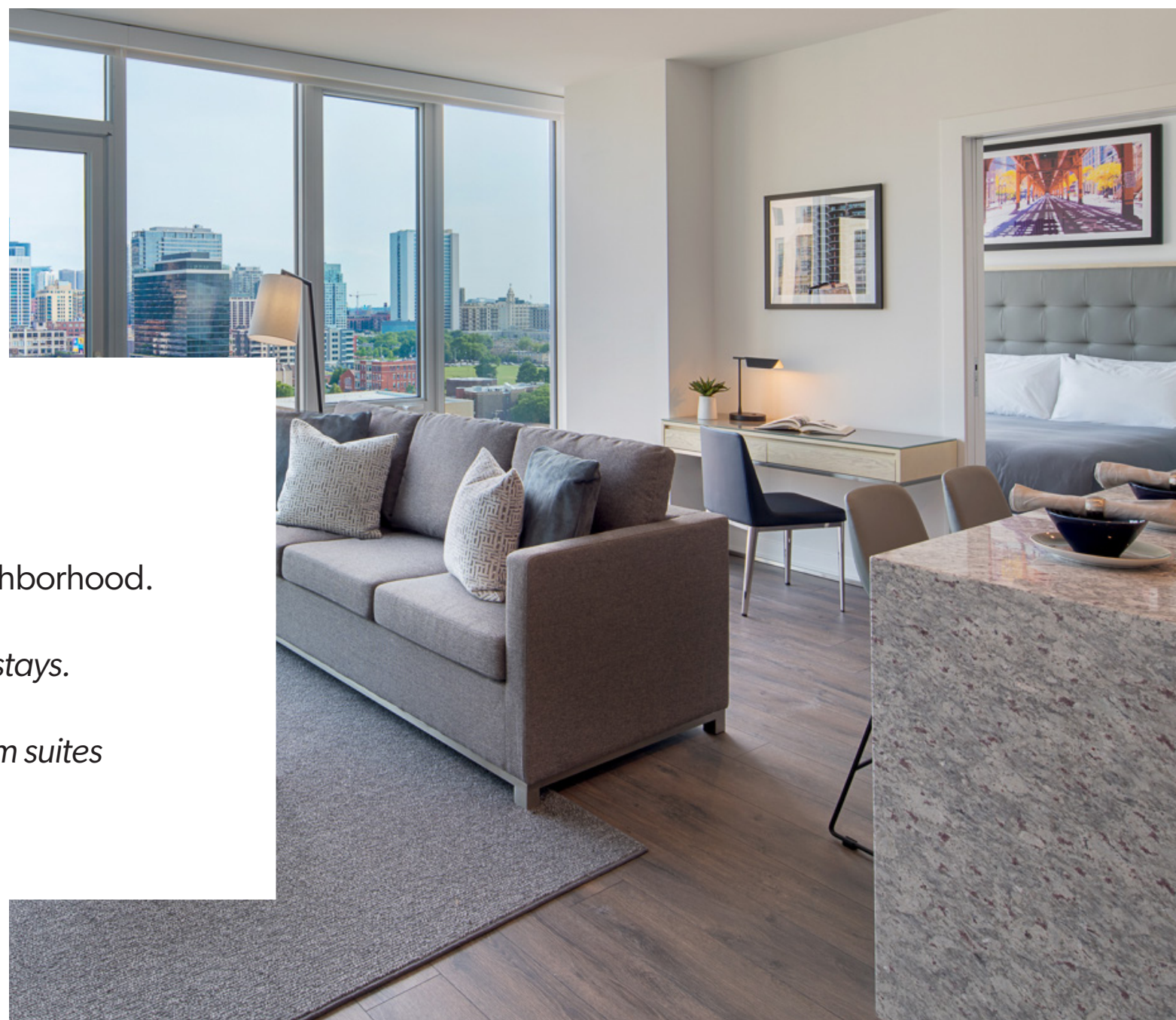
Located in Chicago's Old Town neighborhood.

*Welcomes nightly & extended stays.*

*35 suites & 1 penthouse*

*Studio, one, two or three bedroom suites*

*500 - 1,400 sqft*





# — SEATTLE



## Welcome to Seattle

South Lake Union is one of Seattle's trendiest and most walkable areas - packed with many hip restaurants, food trucks, boutique shops and bustling nightlife. It is also a growing hub for the tech industry and within close proximity to Seattle's most admired attractions.



## SOUTH LAKE UNION

Level Seattle – South Lake Union and its connected community, Onni South Lake Union, is proudly Silver LEED Certified.

*Welcomes nightly & extended stays.  
298 suites + 2 penthouses  
Studio, one, two or three bedroom suites  
and a collection of sky suites  
523 - 1,847 sqft*







— in-suite **amenities**

## FULLY-EQUIPPED KITCHENS

Chef-inspired kitchens boasting premium appliances, including refrigerator, cooktop and oven, microwave, dishwasher, plus all the cookware and dinnerware you'd need to enjoy a home cooked meal.

## IN-SUITE LAUNDRY

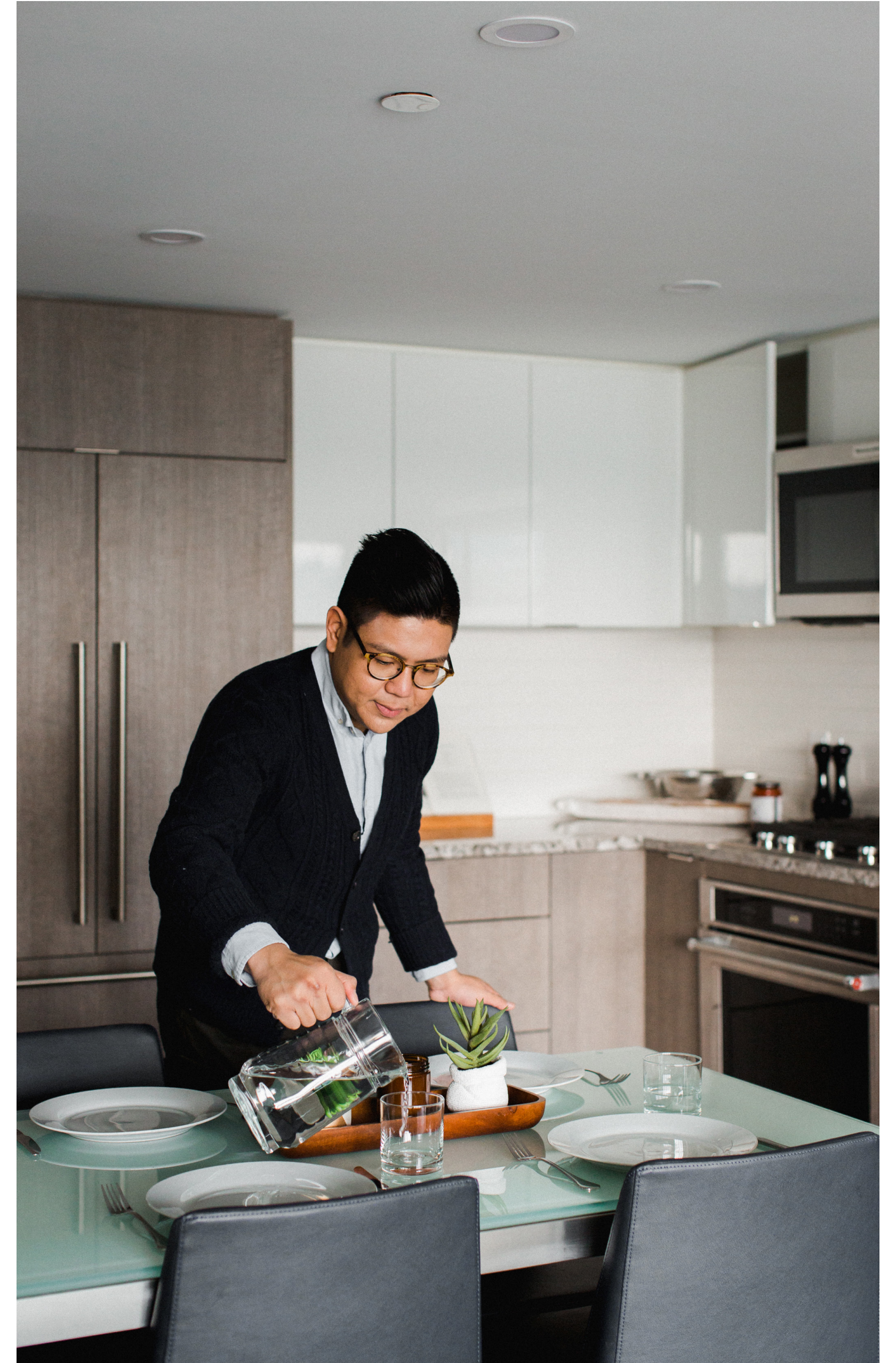
Enjoy the convenience of in-suite energy-efficient washer and dryer.

## HOUSEKEEPING

Housekeeping services are provided at each of our properties. With us for an extended stay? Complimentary bi-weekly housekeeping is included.

## FAMILY FRIENDLY

Pack (a little) lighter knowing all properties offer the option of cribs, diaper pails, high chairs, and more.







## OPEN-AIR BALCONIES

Enjoy a breath of fresh air with private open-air balconies. Balconies and patios vary by size depending on suite and location.

## UTILITIES INCLUDED

Staying a while? All utilities are included—water, electricity, local phone calls, WiFi and more.

## WIFI

Enjoy complimentary high-speed wireless internet in-suite and throughout the property.

## PET-FRIENDLY

Our suites are pet-friendly and many of our properties feature pet-friendly amenities like dog runs and pet spas. Fees apply.





## Elevate your daily routine with amenities that are anything but routine.

From outdoor pools and basketball courts to indoor lounges and pet spas, each of our properties feature a collection of resort-inspired amenities designed with you in mind, allowing you to do the things you love no matter your location.

Leave the cookie cutters in the kitchen. No two Level properties are designed the same, so you can expect exciting new lifestyle amenities to enjoy at each destination you visit.



## LIFESTYLE AMENITIES

- 24-Hour Guest Services
- Fitness Centers
- Saunas & Massage Rooms\*
- Sports Courts\*
- Yoga & Meditation Spaces\*
- Peloton Bike Studios\*
- Outdoor Pools with Cabanas
- Outdoor Entertainment Spaces with BBQs, Firepits and Dining Areas
- Indoor Entertainment Spaces with Chef's Kitchens and Dining Areas
- Private Theatres & Music Rooms\*
- Family Lounges and Children's Play Areas\*
- Dog Runs & Pet Spas\*
- Road Bikes to explore the city\*

\*Not available at all locations.





## LEVEL PENTHOUSE COLLECTION

The Level Penthouse Collection is a prestigious portfolio of luxury accommodations located in North America's most coveted cities. Each boasting sweeping panoramic cityscape views and expansive living space, these sprawling rooftop residences blend design-forward interiors with striking outdoor spaces to deliver unparalleled luxury living.







## RIVER NORTH

Soar above the city with The Penthouse at River North in Chicago. Expertly designed, this three bedroom, four and a half bathroom home seamlessly combines over 6,400 sq ft of luxurious indoor and outdoor living.

## OLD TOWN

Perched atop the 32nd floor, The Penthouse boasts 7,725 sq ft of exceptional indoor and outdoor living space with a private rooftop pool, luxuriously sophisticated design and quintessential 360-degree views of downtown Chicago.



## SOUTH HILL

At just over 19,000 sq ft, The Penthouse is the largest in downtown Los Angeles boasting airy 18 ft floor-to-ceiling windows, a private fitness studio, a rooftop pool and hot tub, and exceptional indoor and outdoor living spaces.





## SOUTH OLIVE

An unprecedented 18,000 sq ft masterpiece, The Penthouse at South Olive encompasses airy 13 ft floor-to-ceiling windows with spectacular 360-degree city views, four bedrooms, a personal theatre, a rooftop pool and expansive entertaining spaces.

## RICHARDS

The Charleson Penthouse embodies sophistication with its combination of design and outstanding living experience in Yaletown. This residence features 4 spacious bedrooms, high ceilings reaching 15 feet, and a rooftop oasis with a lap pool that offers breathtaking views of the city and mountains.

## SEYMOUR

A sprawling 8,425 sq ft of exceptional living space, The Penthouse at Seymour in Vancouver exudes sophistication featuring three bedrooms, a catering kitchen, a rooftop pool and an entertainment space boasting stunning city and mountain views.

## SOUTH LAKE UNION

A collection of luxury penthouses with expansive entertainment areas, patios and sweeping views of the Seattle skyline.