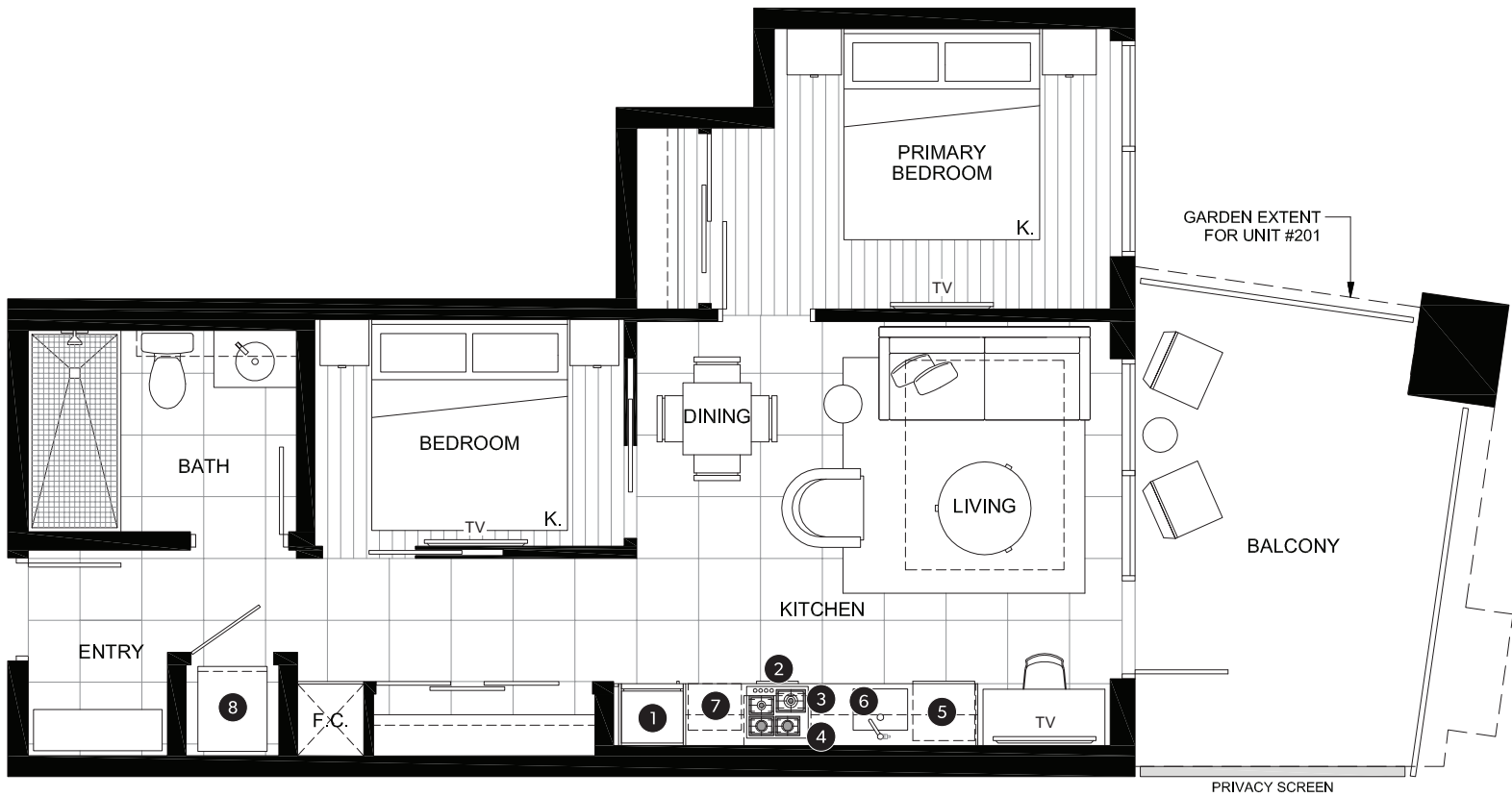


DELUXE TWO BEDROOM SUITE

| | |
|--------------------------------------|--|
| INDOOR AREA 668 SQ FT | OUTDOOR AREA 144 - 175 SQ FT |
| TOTAL AREA 812 - 843 SQ FT | |



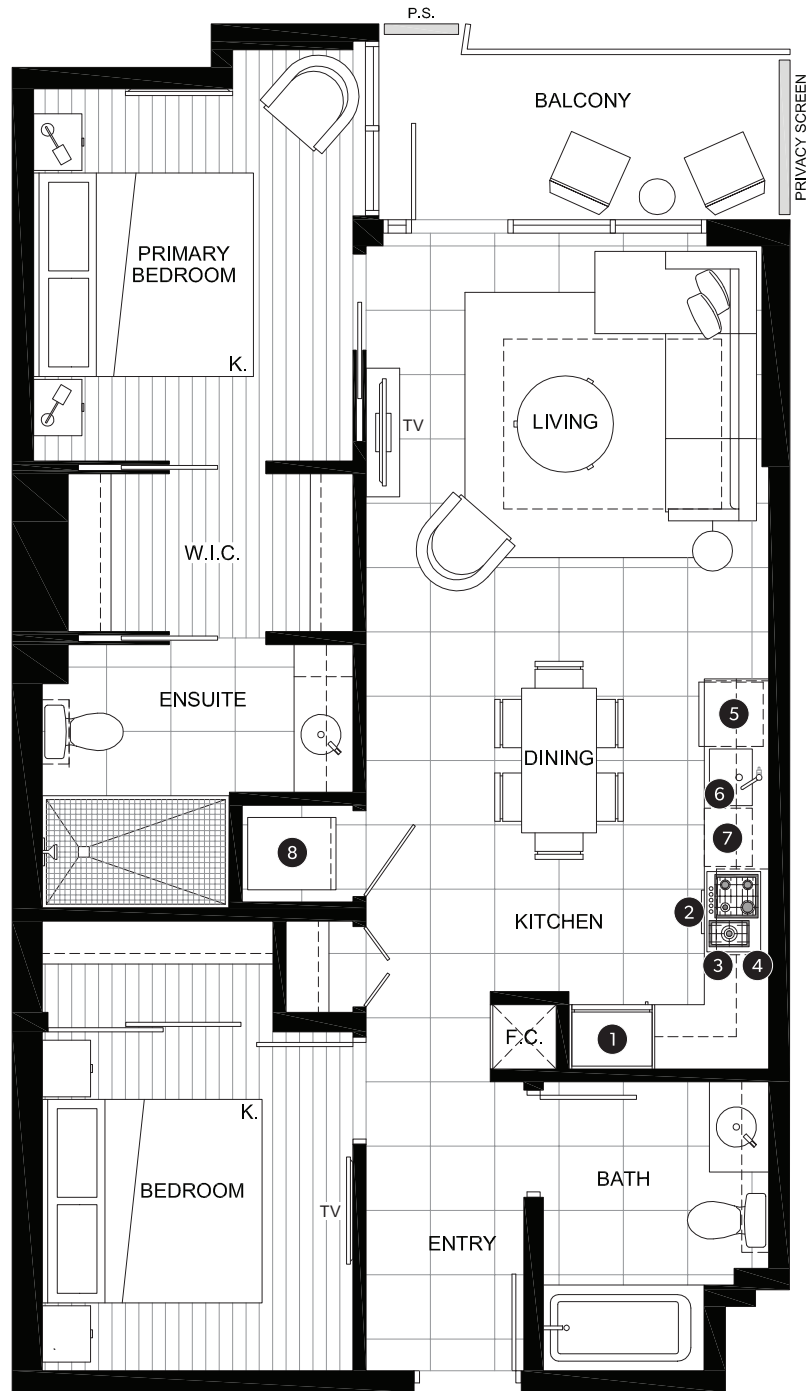
FEATURE LIST:

1. 22" Blomberg Integrated Fridge
2. 24" Fulgor Milano Convection Oven
3. 24" Fulgor Milano 4 Burner Gas Cooktop
4. 24" Faber Cristal Slide-Out Hoodfan
5. Blomberg Integrated Dishwasher
6. Sink Disposal
7. Microwave
8. Full Size Washer and Dryer

The developer reserves the right to make minor modifications to suite and furniture layout, specifications and floor plans should they be necessary to maintain the high standards of this community. Square footage are based on preliminary measurements and are approximate. E & O.E.

EXECUTIVE TWO BEDROOM SUITE

| | |
|----------------------------------|----------------------------------|
| INDOOR AREA 907 SQ FT | OUTDOOR AREA 117 SQ FT |
| TOTAL AREA 1,024 SQ FT | |



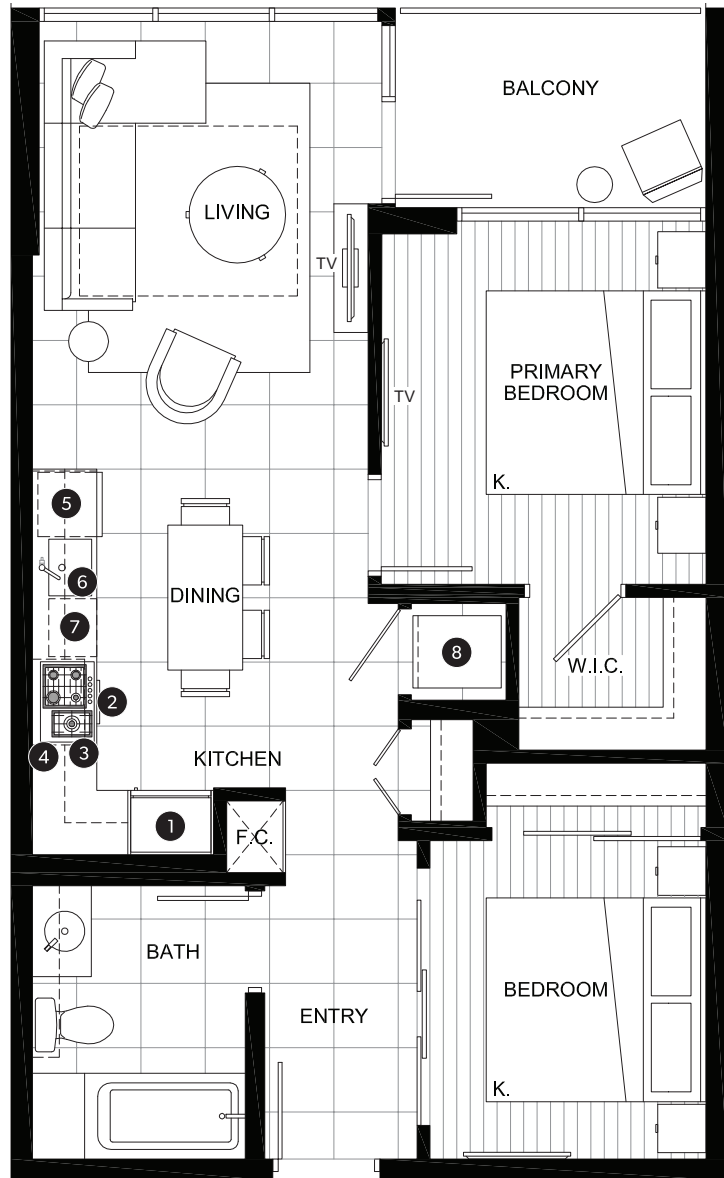
FEATURE LIST:

- | | |
|---|-----------------------------------|
| 1. 22" Blomberg Integrated Fridge | 5. Blomberg Integrated Dishwasher |
| 2. 24" Fulgor Milano Convection Oven | 6. Sink Disposal |
| 3. 24" Fulgor Milano 4 Burner Gas Cooktop | 7. Microwave |
| 4. 24" Faber Cristal Slide-Out Hoodfan | 8. Full Size Washer and Dryer |

The developer reserves the right to make minor modifications to suite and furniture layout, specifications and floor plans should they be necessary to maintain the high standards of this community. Square footage are based on preliminary measurements and are approximate. E & O.E.

DELUXE TWO BEDROOM SUITE

| | |
|--------------------------------------|---------------------------------------|
| INDOOR AREA 704 SQ FT | OUTDOOR AREA 60 - 170 SQ FT |
| TOTAL AREA 764 - 874 SQ FT | |



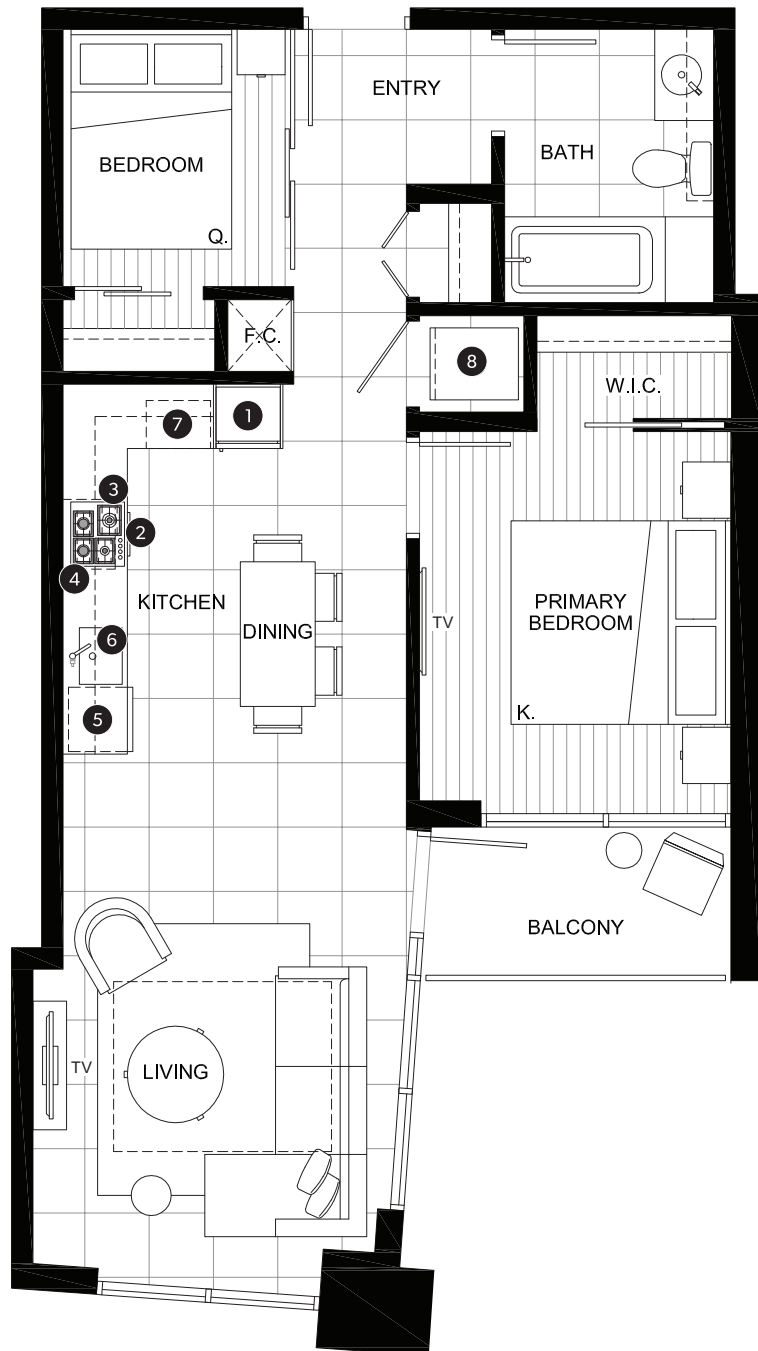
FEATURE LIST:

- | | |
|---|-----------------------------------|
| 1. 22" Blomberg Integrated Fridge | 5. Blomberg Integrated Dishwasher |
| 2. 24" Fulgor Milano Convection Oven | 6. Sink Disposal |
| 3. 24" Fulgor Milano 4 Burner Gas Cooktop | 7. Microwave |
| 4. 24" Faber Cristal Slide-Out Hoodfan | 8. Full Size Washer and Dryer |

The developer reserves the right to make minor modifications to suite and furniture layout, specifications and floor plans should they be necessary to maintain the high standards of this community. Square footage are based on preliminary measurements and are approximate. E & O.E.

TWO BEDROOM SUITE

| | |
|--------------------------------------|---------------------------------------|
| INDOOR AREA 700 SQ FT | OUTDOOR AREA 43 - 270 SQ FT |
| TOTAL AREA 743 - 970 SQ FT | |



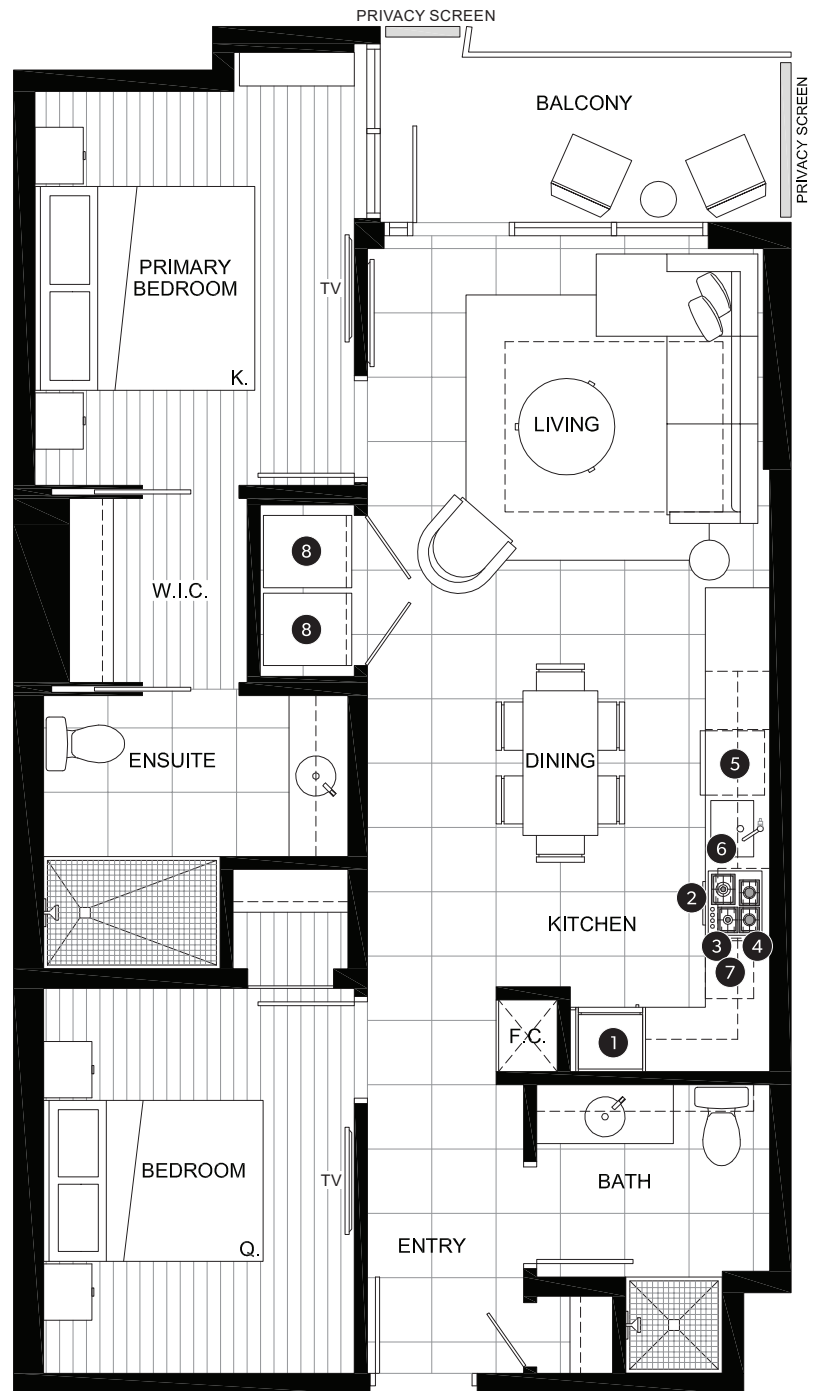
FEATURE LIST:

1. 22" Blomberg Integrated Fridge
2. 24" Fulgor Milano Convection Oven
3. 24" Fulgor Milano 4 Burner Gas Cooktop
4. 24" Faber Cristal Slide-Out Hoodfan
5. Blomberg Integrated Dishwasher
6. Sink Disposal
7. Microwave
8. Full Size Washer and Dryer

The developer reserves the right to make minor modifications to suite and furniture layout, specifications and floor plans should they be necessary to maintain the high standards of this community. Square footage are based on preliminary measurements and are approximate. E & O.E.

EXECUTIVE TWO BEDROOM SUITE

| | |
|---------------------------------|---------------------------------|
| INDOOR AREA 901 SQ FT | OUTDOOR AREA 65 SQ FT |
| TOTAL AREA 966 SQ FT | |



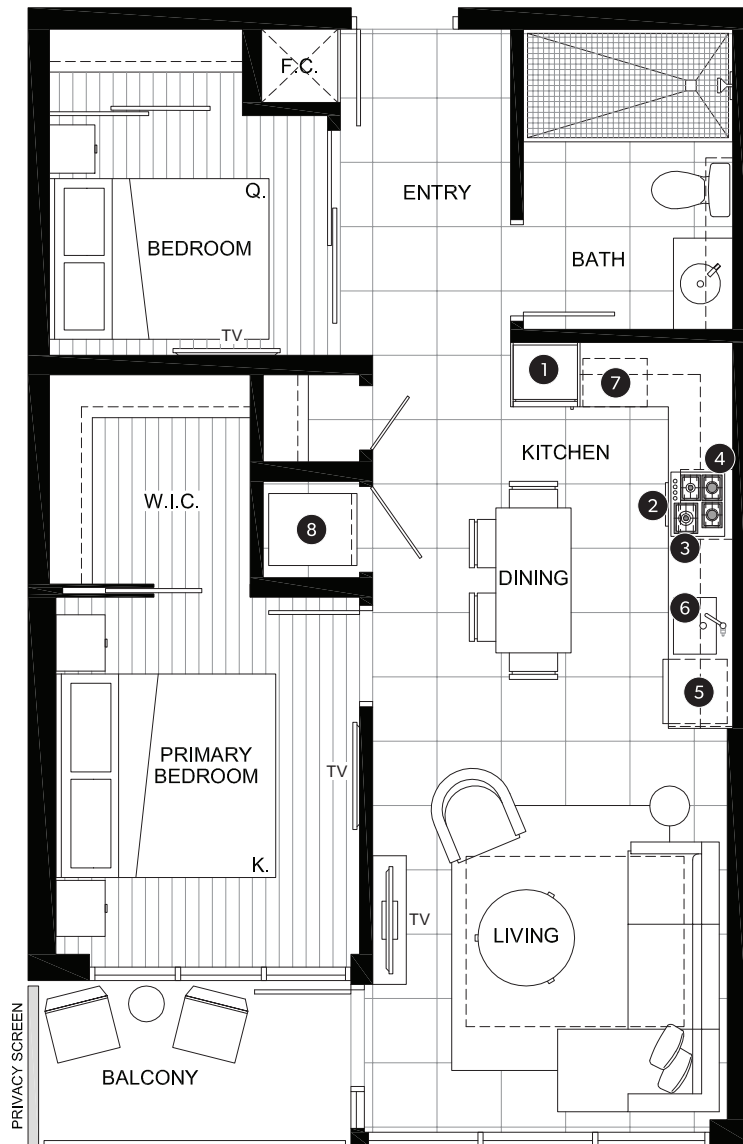
FEATURE LIST:

- | | |
|---|-----------------------------------|
| 1. 22" Blomberg Integrated Fridge | 5. Blomberg Integrated Dishwasher |
| 2. 24" Fulgor Milano Convection Oven | 6. Sink Disposal |
| 3. 24" Fulgor Milano 4 Burner Gas Cooktop | 7. Microwave |
| 4. 24" Faber Cristal Slide-Out Hoodfan | 8. Full Size Washer and Dryer |

The developer reserves the right to make minor modifications to suite and furniture layout, specifications and floor plans should they be necessary to maintain the high standards of this community. Square footage are based on preliminary measurements and are approximate. E & O.E.

TWO BEDROOM SUITE

| | |
|--------------------------------------|---------------------------------------|
| INDOOR AREA 710 SQ FT | OUTDOOR AREA 48 - 150 SQ FT |
| TOTAL AREA 758 - 860 SQ FT | |



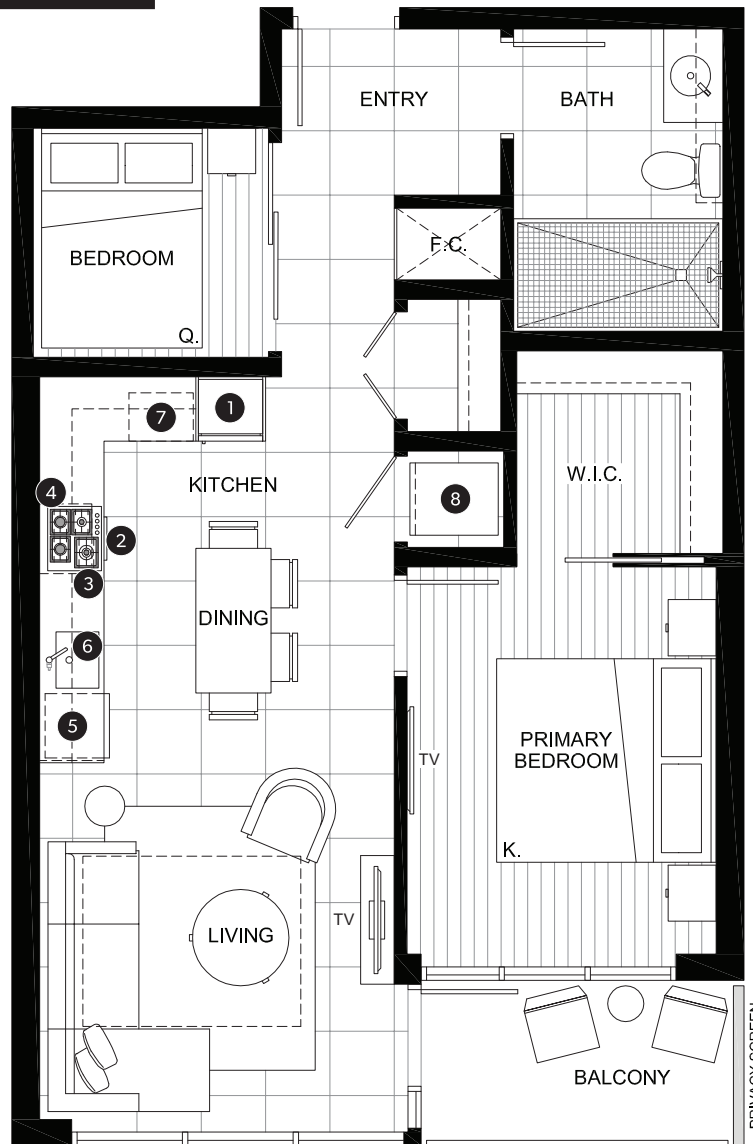
FEATURE LIST:

- | | |
|---|-----------------------------------|
| 1. 22" Blomberg Integrated Fridge | 5. Blomberg Integrated Dishwasher |
| 2. 24" Fulgor Milano Convection Oven | 6. Sink Disposal |
| 3. 24" Fulgor Milano 4 Burner Gas Cooktop | 7. Microwave |
| 4. 24" Faber Cristal Slide-Out Hoodfan | 8. Full Size Washer and Dryer |

The developer reserves the right to make minor modifications to suite and furniture layout, specifications and floor plans should they be necessary to maintain the high standards of this community. Square footage are based on preliminary measurements and are approximate. E & O.E.

TWO BEDROOM SUITE

| | |
|--------------------------------------|---------------------------------------|
| INDOOR AREA 683 SQ FT | OUTDOOR AREA 48 - 150 SQ FT |
| TOTAL AREA 731 - 833 SQ FT | |



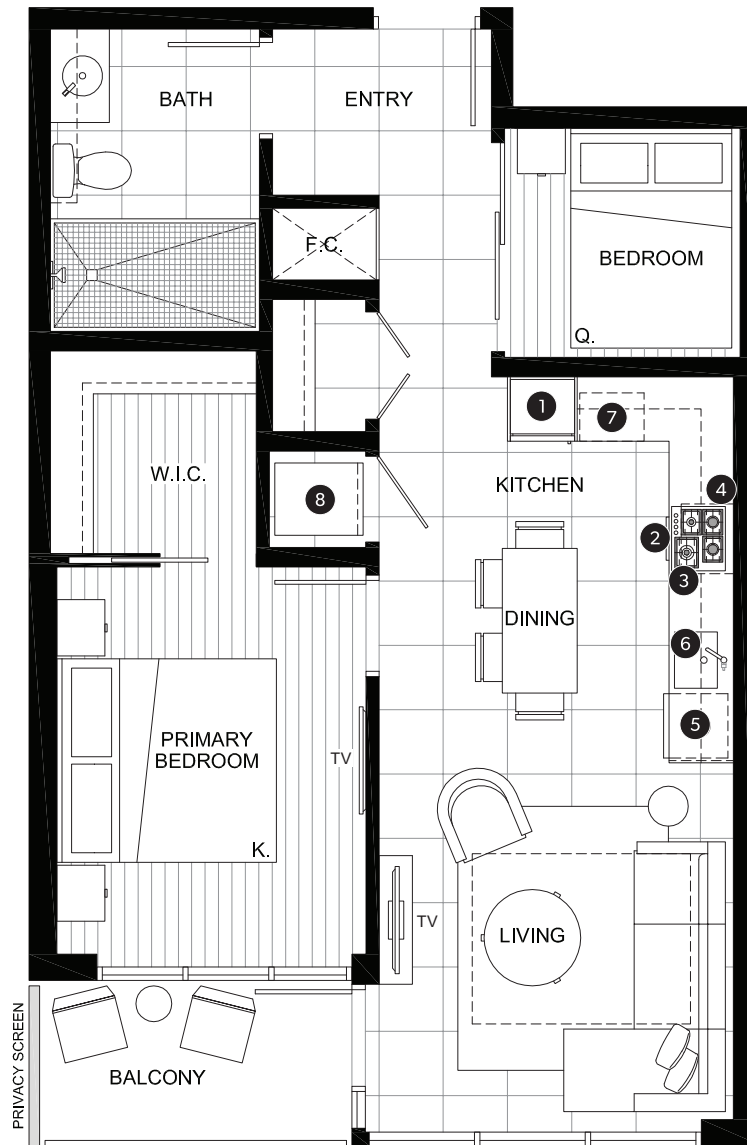
FEATURE LIST:

- | | |
|---|-----------------------------------|
| 1. 22" Blomberg Integrated Fridge | 5. Blomberg Integrated Dishwasher |
| 2. 24" Fulgor Milano Convection Oven | 6. Sink Disposal |
| 3. 24" Fulgor Milano 4 Burner Gas Cooktop | 7. Microwave |
| 4. 24" Faber Cristal Slide-Out Hoodfan | 8. Full Size Washer and Dryer |

The developer reserves the right to make minor modifications to suite and furniture layout, specifications and floor plans should they be necessary to maintain the high standards of this community. Square footage are based on preliminary measurements and are approximate. E & O.E.

TWO BEDROOM SUITE

| | |
|--------------------------------------|---------------------------------------|
| INDOOR AREA 683 SQ FT | OUTDOOR AREA 48 - 150 SQ FT |
| TOTAL AREA 731 - 833 SQ FT | |



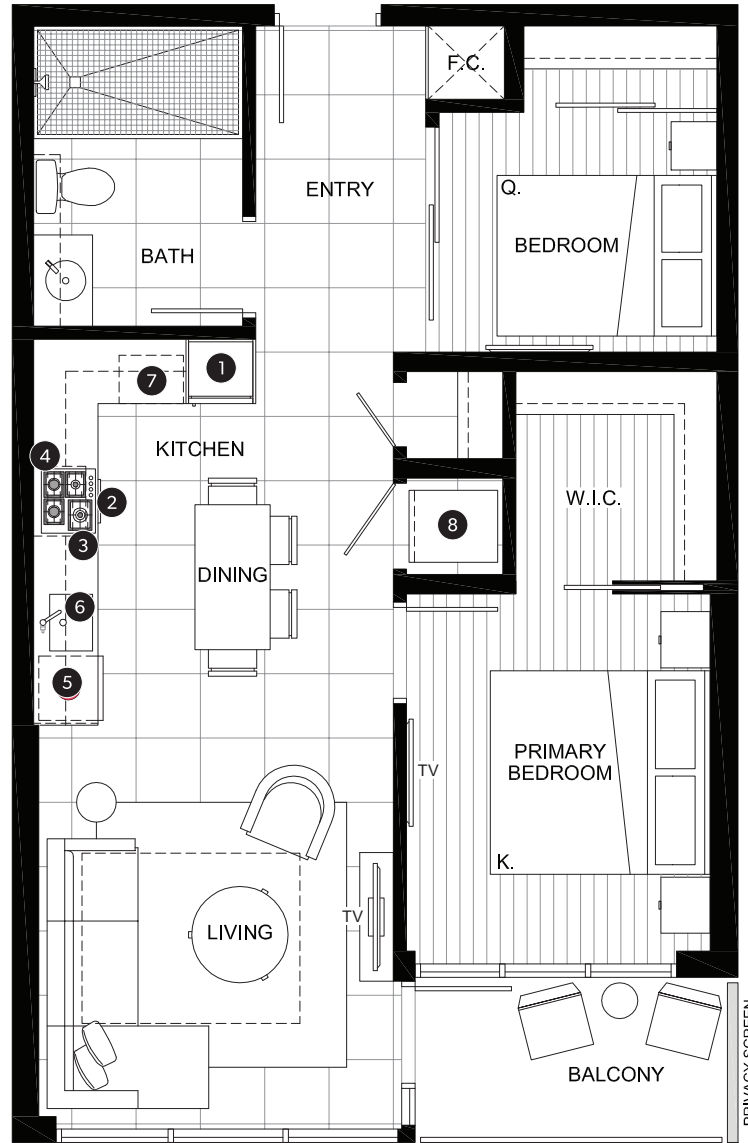
FEATURE LIST:

- | | |
|---|-----------------------------------|
| 1. 22" Blomberg Integrated Fridge | 5. Blomberg Integrated Dishwasher |
| 2. 24" Fulgor Milano Convection Oven | 6. Sink Disposal |
| 3. 24" Fulgor Milano 4 Burner Gas Cooktop | 7. Microwave |
| 4. 24" Faber Cristal Slide-Out Hoodfan | 8. Full Size Washer and Dryer |

The developer reserves the right to make minor modifications to suite and furniture layout, specifications and floor plans should they be necessary to maintain the high standards of this community. Square footage are based on preliminary measurements and are approximate. E & O.E.

TWO BEDROOM SUITE

| | |
|--------------------------------------|---------------------------------------|
| INDOOR AREA 710 SQ FT | OUTDOOR AREA 48 - 150 SQ FT |
| TOTAL AREA 758 - 860 SQ FT | |



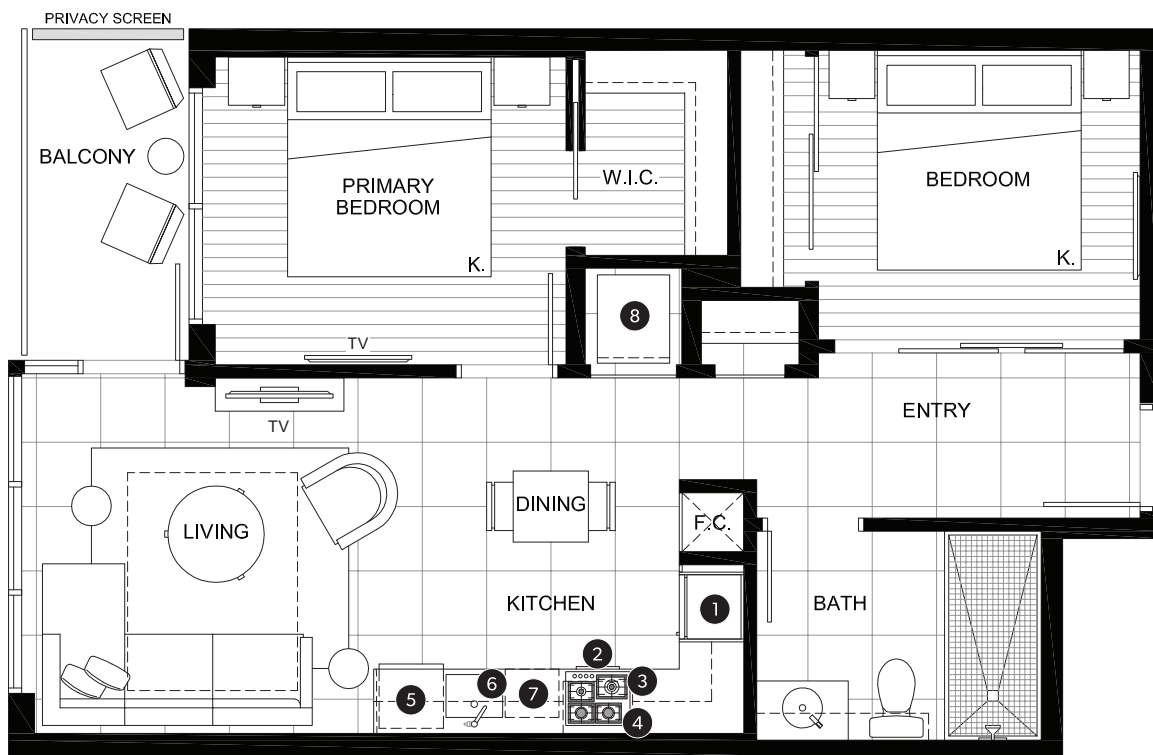
FEATURE LIST:

- | | |
|---|-----------------------------------|
| 1. 22" Blomberg Integrated Fridge | 5. Blomberg Integrated Dishwasher |
| 2. 24" Fulgor Milano Convection Oven | 6. Sink Disposal |
| 3. 24" Fulgor Milano 4 Burner Gas Cooktop | 7. Microwave |
| 4. 24" Faber Cristal Slide-Out Hoodfan | 8. Full Size Washer and Dryer |

The developer reserves the right to make minor modifications to suite and furniture layout, specifications and floor plans should they be necessary to maintain the high standards of this community. Square footage are based on preliminary measurements and are approximate. E & O.E.

DELUXE TWO BEDROOM SUITE

| | |
|---------------------------------|---------------------------------|
| INDOOR AREA 689 SQ FT | OUTDOOR AREA 50 SQ FT |
| TOTAL AREA 739 SQ FT | |



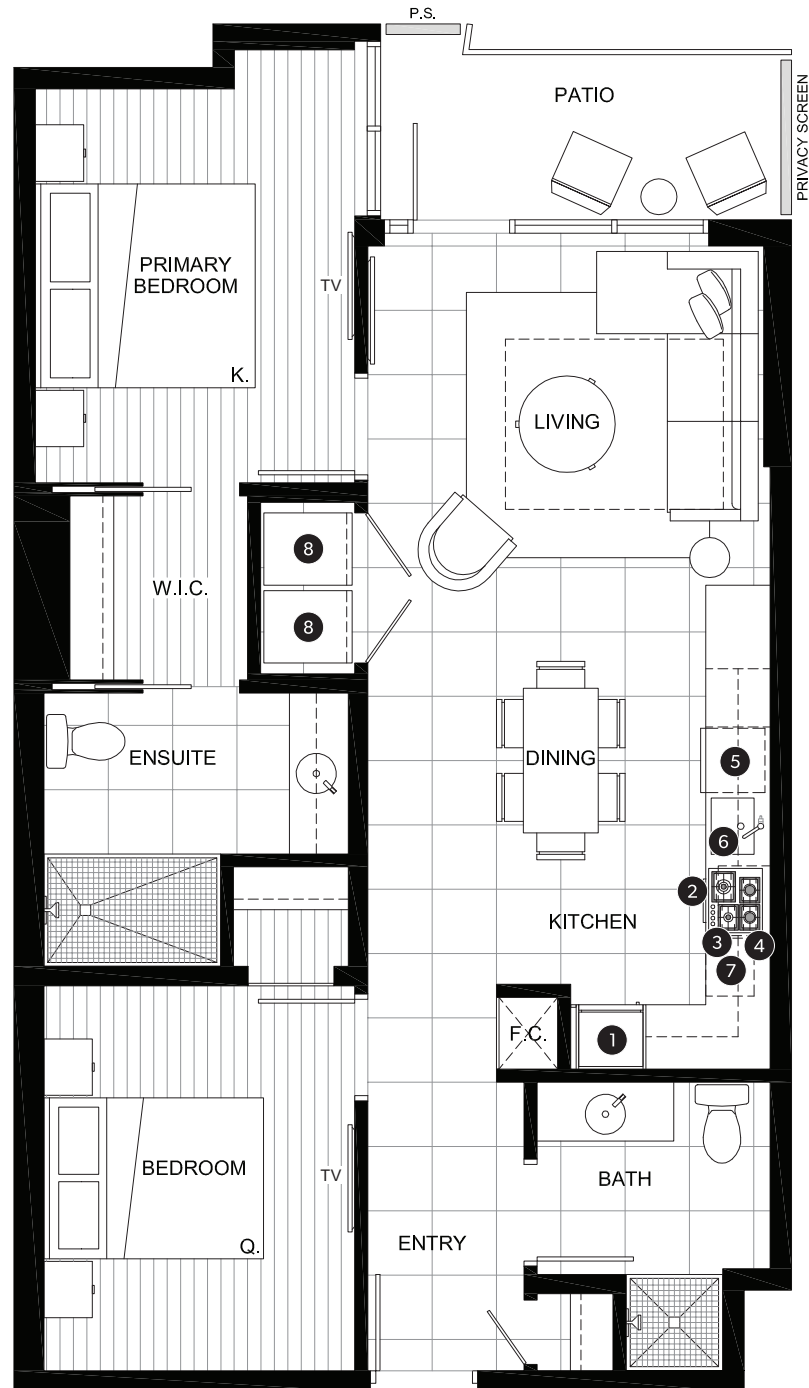
FEATURE LIST:

- | | |
|---|-----------------------------------|
| 1. 22" Blomberg Integrated Fridge | 5. Blomberg Integrated Dishwasher |
| 2. 24" Fulgor Milano Convection Oven | 6. Sink Disposal |
| 3. 24" Fulgor Milano 4 Burner Gas Cooktop | 7. Microwave |
| 4. 24" Faber Cristal Slide-Out Hoodfan | 8. Full Size Washer and Dryer |

The developer reserves the right to make minor modifications to suite and furniture layout, specifications and floor plans should they be necessary to maintain the high standards of this community. Square footage are based on preliminary measurements and are approximate. E & O.E.

DELUXE TWO BEDROOM SUITE (ADA available)

| | |
|---------------------------------|---------------------------------|
| INDOOR AREA 891 SQ FT | OUTDOOR AREA 65 SQ FT |
| TOTAL AREA 956 SQ FT | |



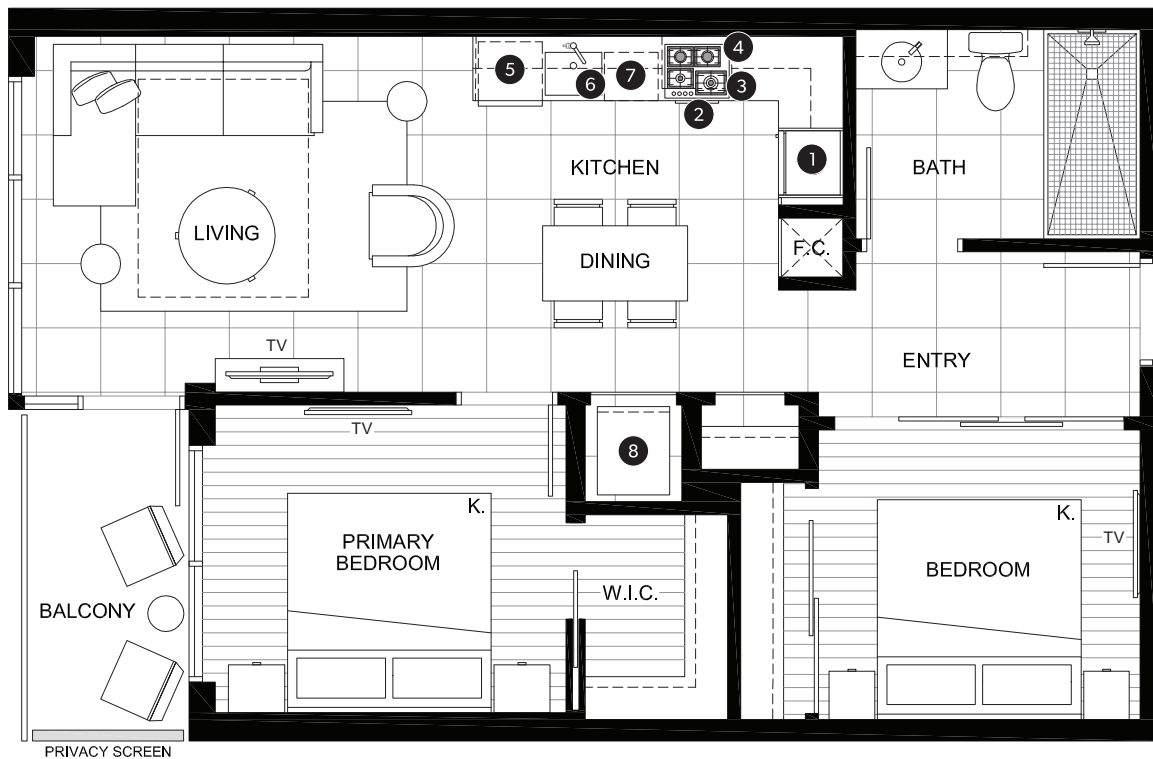
FEATURE LIST:

- | | |
|---|-----------------------------------|
| 1. 22" Blomberg Integrated Fridge | 5. Blomberg Integrated Dishwasher |
| 2. 24" Fulgor Milano Convection Oven | 6. Sink Disposal |
| 3. 24" Fulgor Milano 4 Burner Gas Cooktop | 7. Microwave |
| 4. 24" Faber Cristal Slide-Out Hoodfan | 8. Full Size Washer and Dryer |

The developer reserves the right to make minor modifications to suite and furniture layout, specifications and floor plans should they be necessary to maintain the high standards of this community. Square footage are based on preliminary measurements and are approximate. E & O.E.

DELUXE TWO BEDROOM SUITE

| | |
|---------------------------------|---------------------------------|
| INDOOR AREA 712 SQ FT | OUTDOOR AREA 50 SQ FT |
| TOTAL AREA 762 SQ FT | |



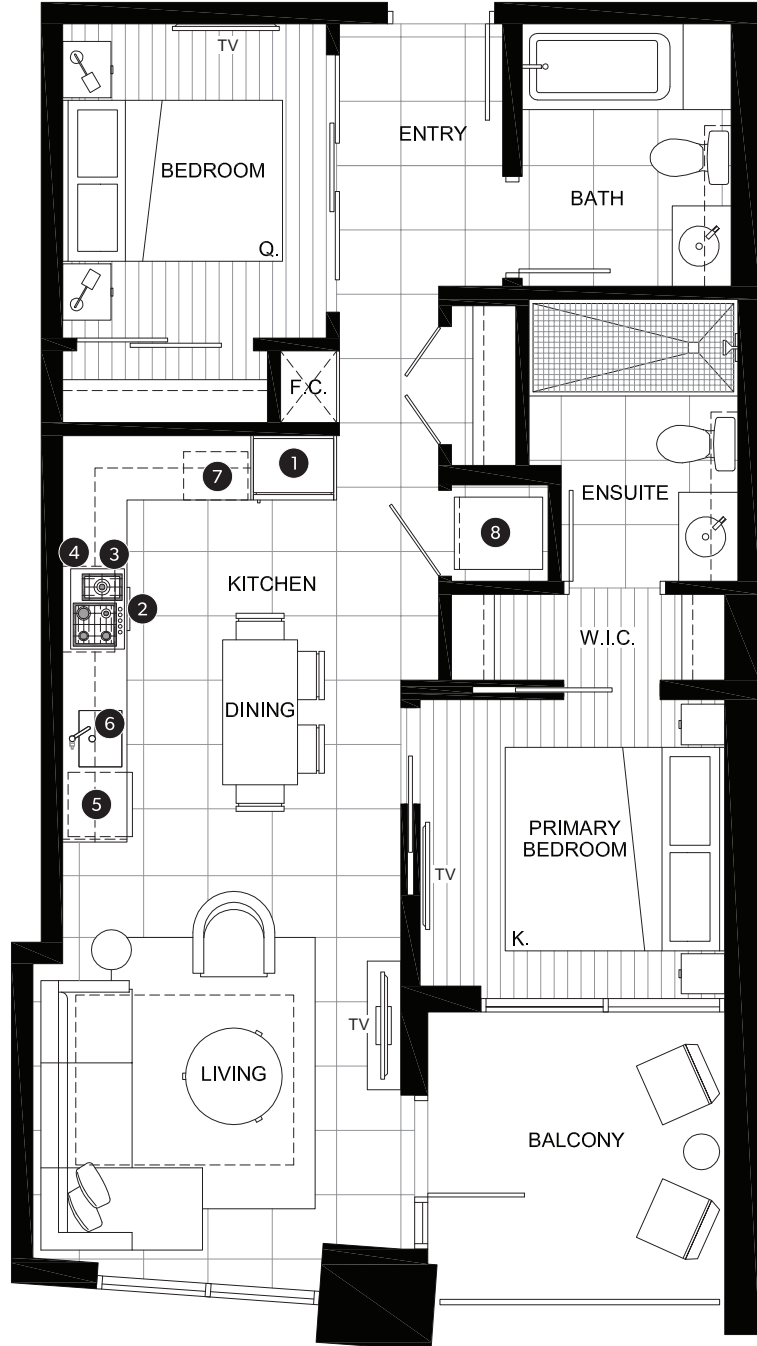
FEATURE LIST:

- | | |
|---|-----------------------------------|
| 1. 22" Blomberg Integrated Fridge | 5. Blomberg Integrated Dishwasher |
| 2. 24" Fulgor Milano Convection Oven | 6. Sink Disposal |
| 3. 24" Fulgor Milano 4 Burner Gas Cooktop | 7. Microwave |
| 4. 24" Faber Cristal Slide-Out Hoodfan | 8. Full Size Washer and Dryer |

The developer reserves the right to make minor modifications to suite and furniture layout, specifications and floor plans should they be necessary to maintain the high standards of this community. Square footage are based on preliminary measurements and are approximate. E & O.E.

EXECUTIVE TWO BEDROOM SUITE

| | |
|---------------------------------|---------------------------------|
| INDOOR AREA 771 SQ FT | OUTDOOR AREA 82 SQ FT |
| TOTAL AREA 853 SQ FT | |



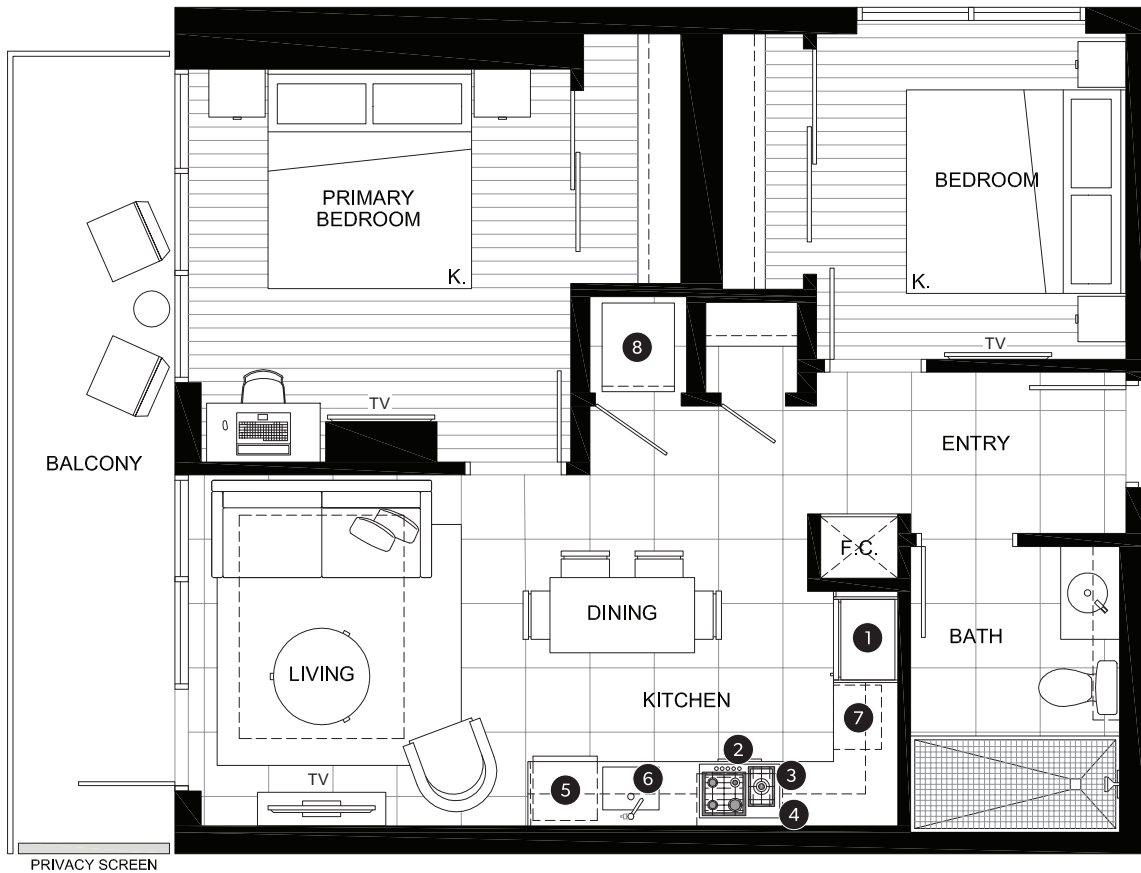
FEATURE LIST:

1. 22" Blomberg Integrated Fridge
2. 24" Fulgor Milano Convection Oven
3. 24" Fulgor Milano 4 Burner Gas Cooktop
4. 24" Faber Cristal Slide-Out Hoodfan
5. Blomberg Integrated Dishwasher
6. Sink Disposal
7. Microwave
8. Full Size Washer and Dryer

The developer reserves the right to make minor modifications to suite and furniture layout, specifications and floor plans should they be necessary to maintain the high standards of this community. Square footage are based on preliminary measurements and are approximate. E & O.E.

DELUXE TWO BEDROOM SUITE

| | |
|---------------------------------|----------------------------------|
| INDOOR AREA 733 SQ FT | OUTDOOR AREA 123 SQ FT |
| TOTAL AREA 856 SQ FT | |



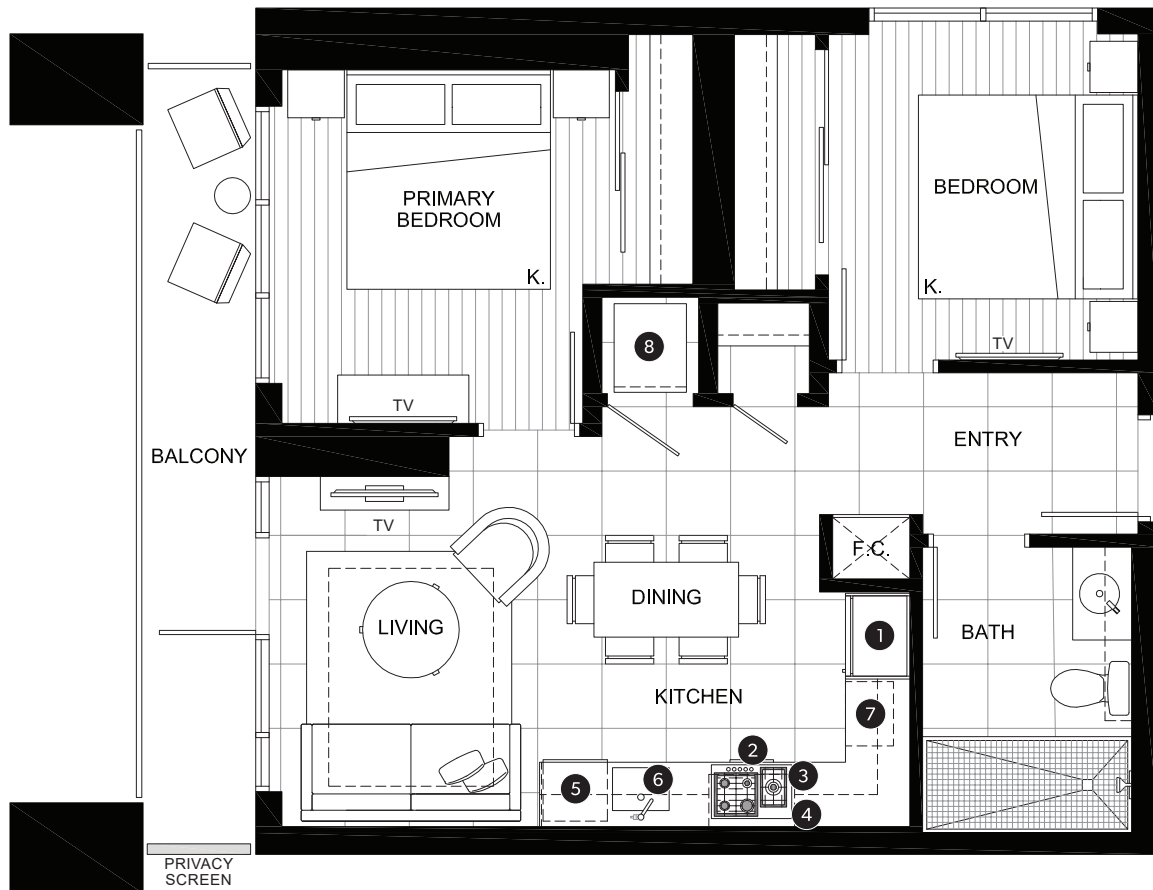
FEATURE LIST:

- | | |
|---|-----------------------------------|
| 1. 22" Blomberg Integrated Fridge | 5. Blomberg Integrated Dishwasher |
| 2. 24" Fulgor Milano Convection Oven | 6. Sink Disposal |
| 3. 24" Fulgor Milano 4 Burner Gas Cooktop | 7. Microwave |
| 4. 24" Faber Cristal Slide-Out Hoodfan | 8. Full Size Washer and Dryer |

The developer reserves the right to make minor modifications to suite and furniture layout, specifications and floor plans should they be necessary to maintain the high standards of this community. Square footage are based on preliminary measurements and are approximate. E & O.E.

DELUXE TWO BEDROOM SUITE

| | |
|---------------------------------|----------------------------------|
| INDOOR AREA 679 SQ FT | OUTDOOR AREA 100 SQ FT |
| TOTAL AREA 779 SQ FT | |



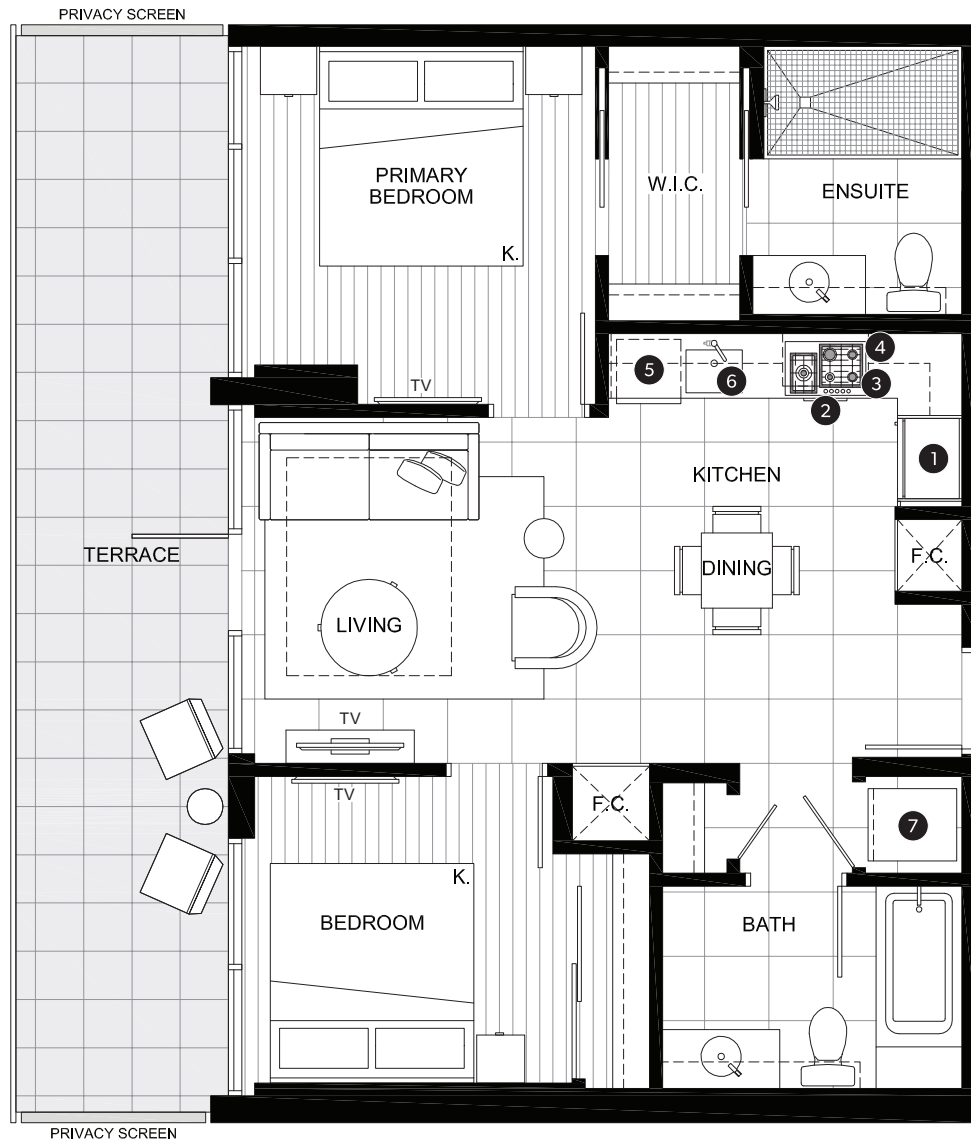
FEATURE LIST:

- | | |
|---|-----------------------------------|
| 1. 22" Blomberg Integrated Fridge | 5. Blomberg Integrated Dishwasher |
| 2. 24" Fulgor Milano Convection Oven | 6. Sink Disposal |
| 3. 24" Fulgor Milano 4 Burner Gas Cooktop | 7. Microwave |
| 4. 24" Faber Cristal Slide-Out Hoodfan | 8. Full Size Washer and Dryer |

The developer reserves the right to make minor modifications to suite and furniture layout, specifications and floor plans should they be necessary to maintain the high standards of this community. Square footage are based on preliminary measurements and are approximate. E & O.E.

DELUXE TWO BEDROOM SUITE

| | |
|---------------------------------|----------------------------------|
| INDOOR AREA 758 SQ FT | OUTDOOR AREA 220 SQ FT |
| TOTAL AREA 978 SQ FT | |



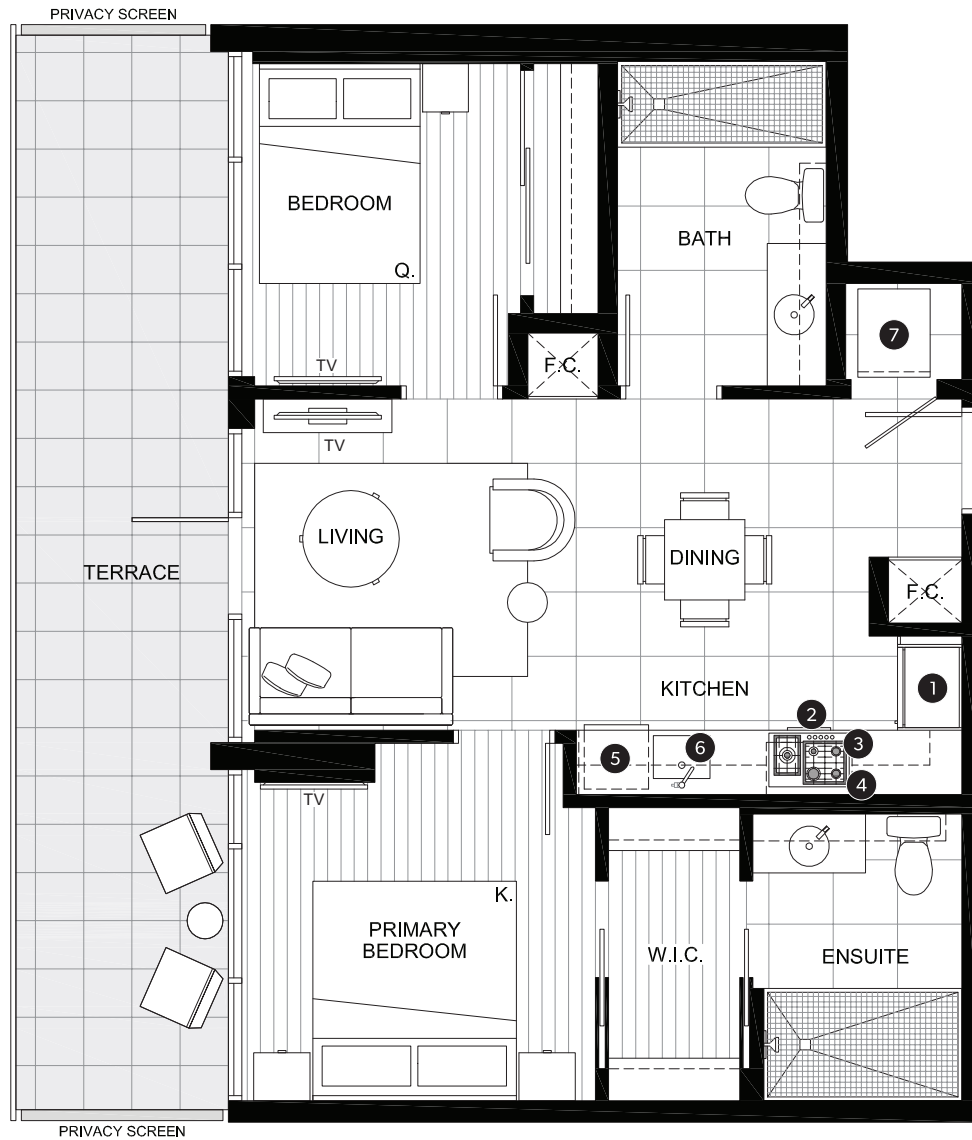
FEATURE LIST:

1. 22" Blomberg Integrated Fridge
2. 24" Fulgor Milano Convection Oven
3. 24" Fulgor Milano 4 Burner Gas Cooktop
4. 24" Faber Cristal Slide-Out Hoodfan
5. Blomberg Integrated Dishwasher
6. Sink Disposal
7. Full Size Washer and Dryer

The developer reserves the right to make minor modifications to suite and furniture layout, specifications and floor plans should they be necessary to maintain the high standards of this community. Square footage are based on preliminary measurements and are approximate. E & O.E.

EXECUTIVE TWO BEDROOM SUITE

| | |
|---------------------------------|----------------------------------|
| INDOOR AREA 726 SQ FT | OUTDOOR AREA 220 SQ FT |
| TOTAL AREA 946 SQ FT | |



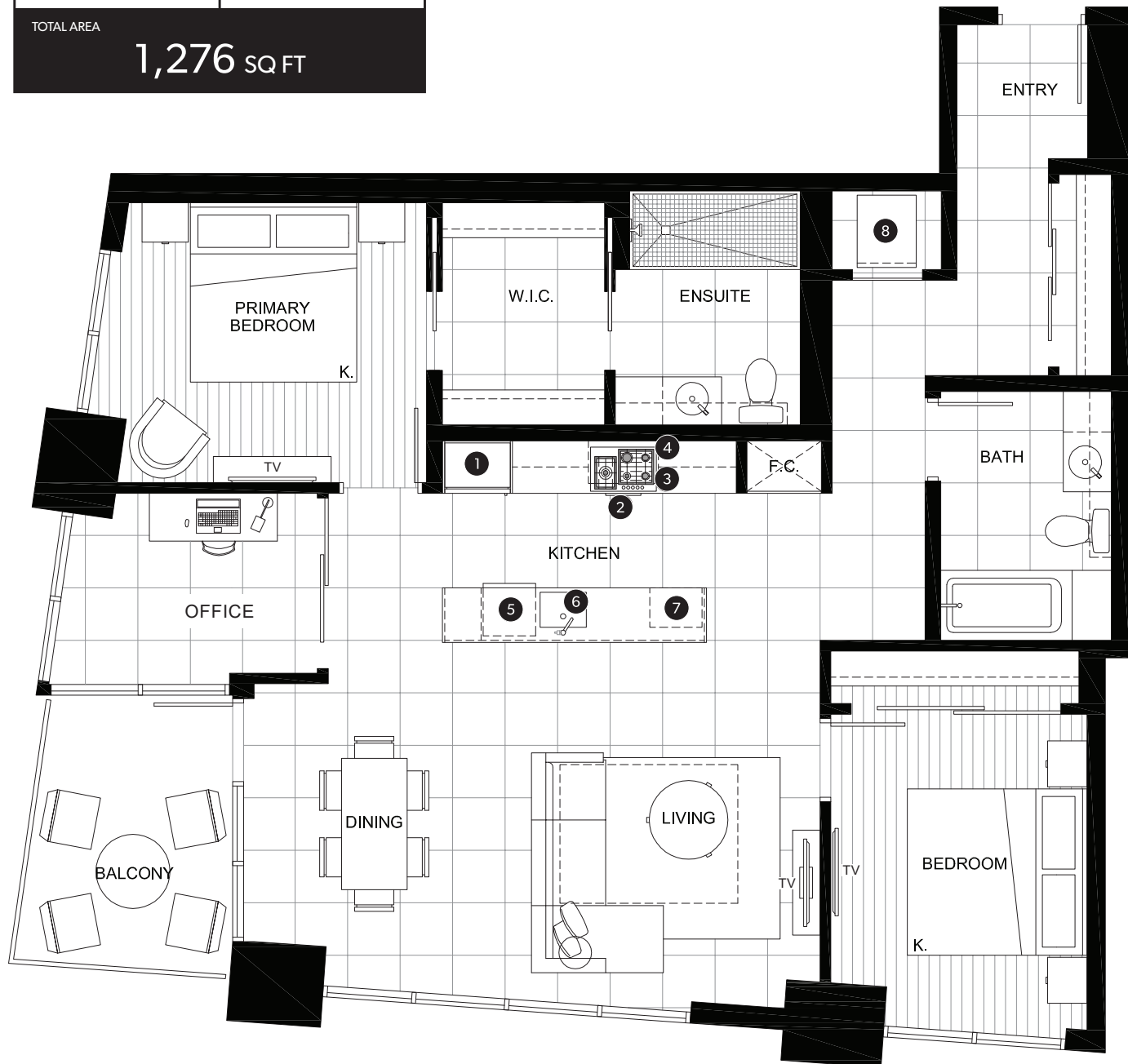
FEATURE LIST:

1. 22" Blomberg Integrated Fridge
2. 24" Fulgor Milano Convection Oven
3. 24" Fulgor Milano 4 Burner Gas Cooktop
4. 24" Faber Cristal Slide-Out Hoodfan
5. Blomberg Integrated Dishwasher
6. Sink Disposal
7. Full Size Washer and Dryer

The developer reserves the right to make minor modifications to suite and furniture layout, specifications and floor plans should they be necessary to maintain the high standards of this community. Square footage are based on preliminary measurements and are approximate. E & O.E.

EXECUTIVE TWO BEDROOM SUITE & OFFICE

| | |
|-----------------------------------|---------------------------------|
| INDOOR AREA 1,196 SQ FT | OUTDOOR AREA 80 SQ FT |
| TOTAL AREA 1,276 SQ FT | |



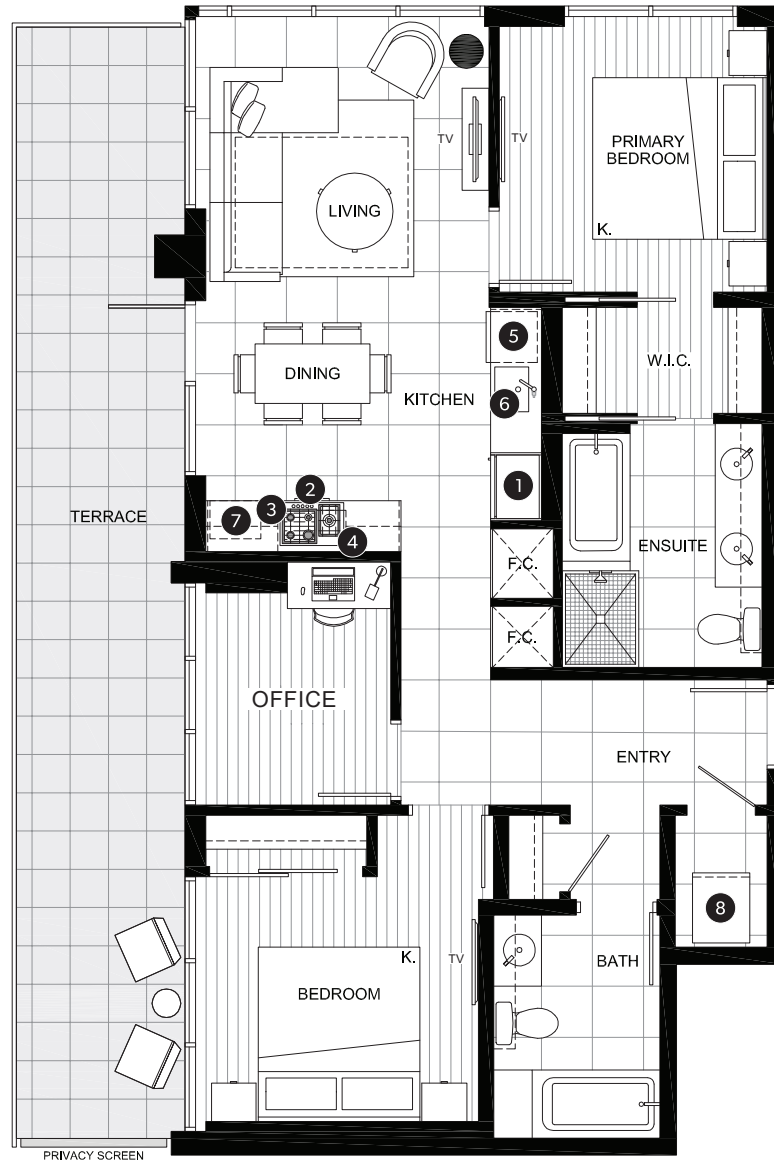
FEATURE LIST:

- | | |
|---|-----------------------------------|
| 1. 22" Blomberg Integrated Fridge | 5. Blomberg Integrated Dishwasher |
| 2. 24" Fulgor Milano Convection Oven | 6. Sink Disposal |
| 3. 24" Fulgor Milano 4 Burner Gas Cooktop | 7. Microwave |
| 4. 24" Faber Cristal Slide-Out Hoodfan | 8. Full Size Washer and Dryer |

The developer reserves the right to make minor modifications to suite and furniture layout, specifications and floor plans should they be necessary to maintain the high standards of this community. Square footage are based on preliminary measurements and are approximate. E & O.E.

EXECUTIVE TWO BEDROOM SUITE & OFFICE

| | |
|----------------------------------|----------------------------------|
| INDOOR AREA 966 SQ FT | OUTDOOR AREA 285 SQ FT |
| TOTAL AREA 1,251 SQ FT | |



FEATURE LIST:

- | | |
|---|-----------------------------------|
| 1. 22" Blomberg Integrated Fridge | 5. Blomberg Integrated Dishwasher |
| 2. 24" Fulgor Milano Convection Oven | 6. Sink Disposal |
| 3. 24" Fulgor Milano 4 Burner Gas Cooktop | 7. Microwave |
| 4. 24" Faber Cristal Slide-Out Hoodfan | 8. Full Size Washer and Dryer |

The developer reserves the right to make minor modifications to suite and furniture layout, specifications and floor plans should they be necessary to maintain the high standards of this community. Square footage are based on preliminary measurements and are approximate. E & O.E.