

## 2 BEDROOM SUITE

INDOOR AREA <b>728 SQ FT</b>	OUTDOOR AREA <b>60 - 85 SQ FT</b>
TOTAL AREA <b>788 - 813 SQ FT</b>	



### FEATURE LIST:

- |                                    |                                     |
|------------------------------------|-------------------------------------|
| 1. 24" Integrated Fridge           | 5. Integrated Dishwasher            |
| 2. 24" Bosch Induction Cooktop     | 6. Sink Disposal                    |
| 3. 24" Fulgor Microwave Hood Combo | 7. High-Efficiency Washer and Dryer |
| 4. 24" Fulgor Convention Wall Oven |                                     |

The developer reserves the right to make minor modifications to suite and furniture layout, specifications and floor plans should they be necessary to maintain the high standards of this community. Square footage are based on preliminary measurements and are approximate. E & O.E.

## JR 2 BEDROOM & OFFICE SUITE

INDOOR AREA <b>657 SQ FT</b>	OUTDOOR AREA <b>110 - 155 SQ FT</b>
TOTAL AREA <b>767 - 812 SQ FT</b>	



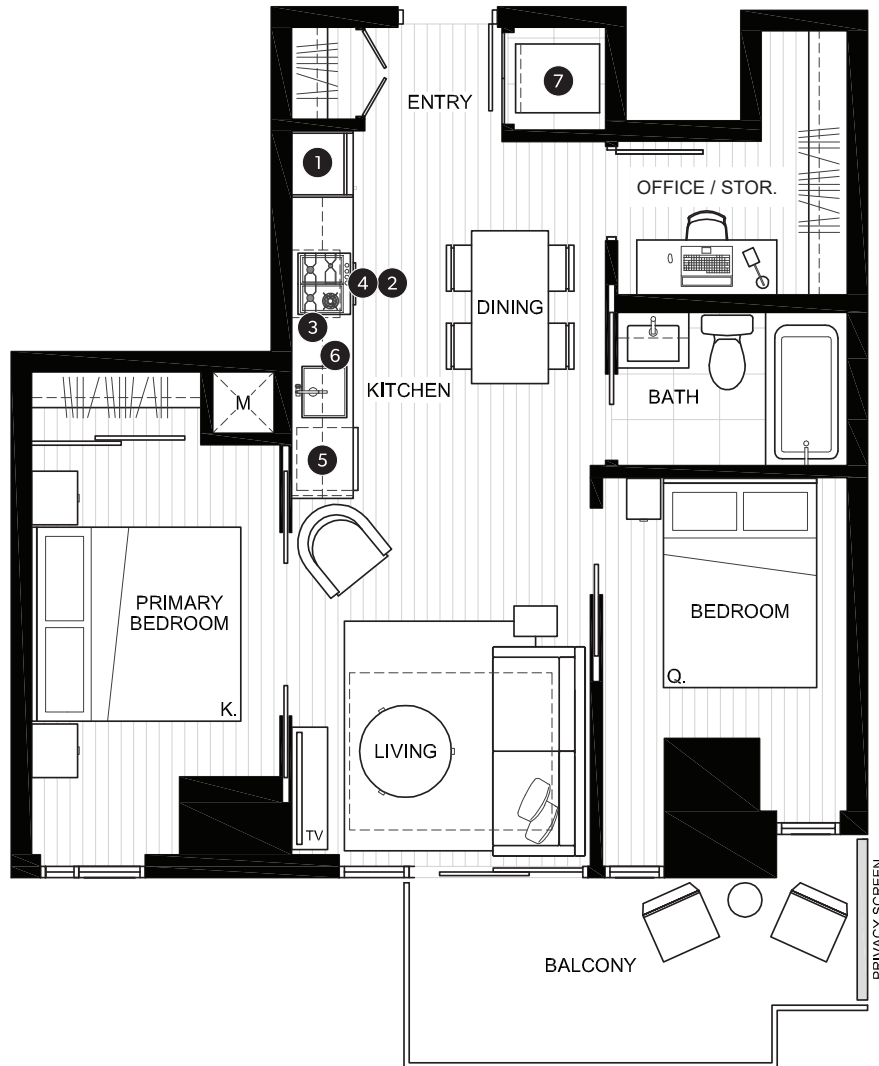
### FEATURE LIST:

- |                                    |                                     |
|------------------------------------|-------------------------------------|
| 1. 24" Integrated Fridge           | 5. Integrated Dishwasher            |
| 2. 24" Bosch Induction Cooktop     | 6. Sink Disposal                    |
| 3. 24" Fulgor Microwave Hood Combo | 7. High-Efficiency Washer and Dryer |
| 4. 24" Fulgor Convention Wall Oven |                                     |

The developer reserves the right to make minor modifications to suite and furniture layout, specifications and floor plans should they be necessary to maintain the high standards of this community. Square footage are based on preliminary measurements and are approximate. E & O.E.

## JR 2 BEDROOM & OFFICE SUITE

INDOOR AREA <b>667 SQ FT</b>	OUTDOOR AREA <b>85 - 110 SQ FT</b>
TOTAL AREA <b>752 - 777 SQ FT</b>	



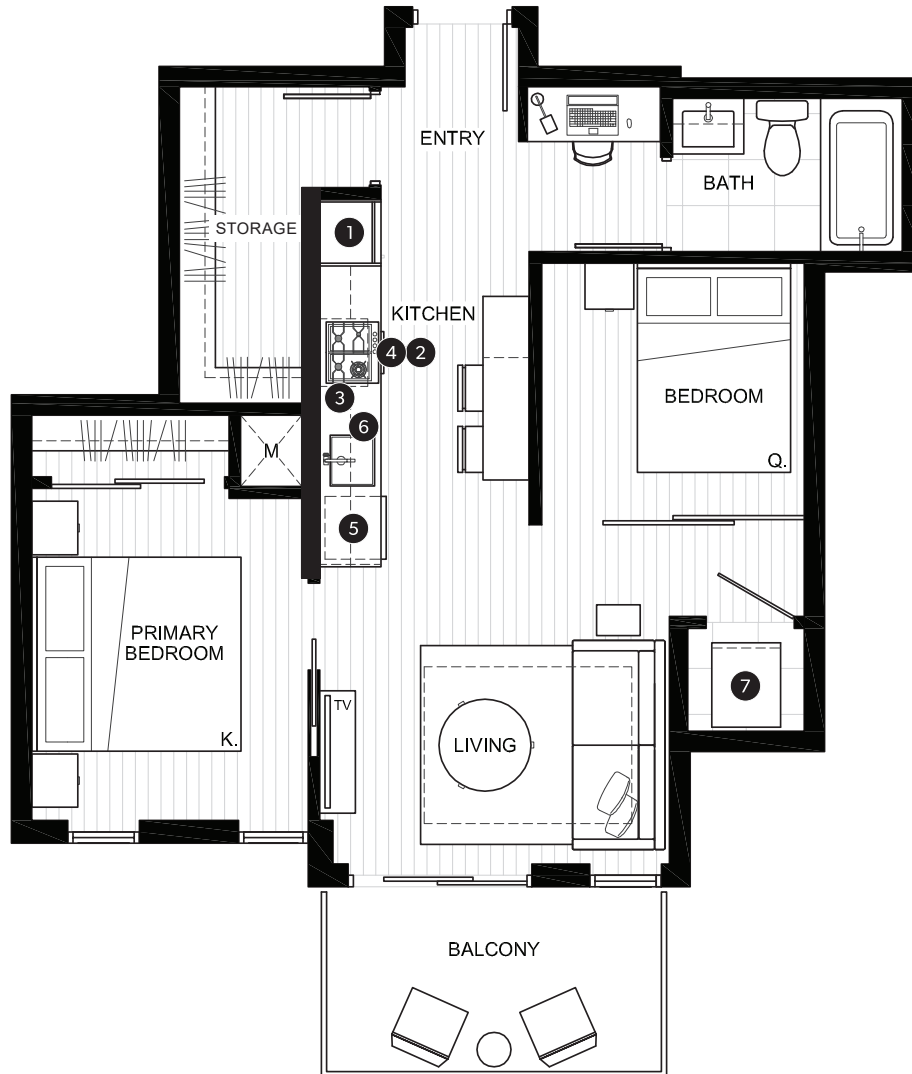
### FEATURE LIST:

- |                                    |                                     |
|------------------------------------|-------------------------------------|
| 1. 24" Integrated Fridge           | 5. Integrated Dishwasher            |
| 2. 24" Bosch Induction Cooktop     | 6. Sink Disposal                    |
| 3. 24" Fulgor Microwave Hood Combo | 7. High-Efficiency Washer and Dryer |
| 4. 24" Fulgor Convention Wall Oven |                                     |

The developer reserves the right to make minor modifications to suite and furniture layout, specifications and floor plans should they be necessary to maintain the high standards of this community. Square footage are based on preliminary measurements and are approximate. E & O.E.

## JR 2 BEDROOM SUITE

INDOOR AREA <b>621 SQ FT</b>	OUTDOOR AREA <b>65 - 95 SQ FT</b>
TOTAL AREA <b>686 - 716 SQ FT</b>	



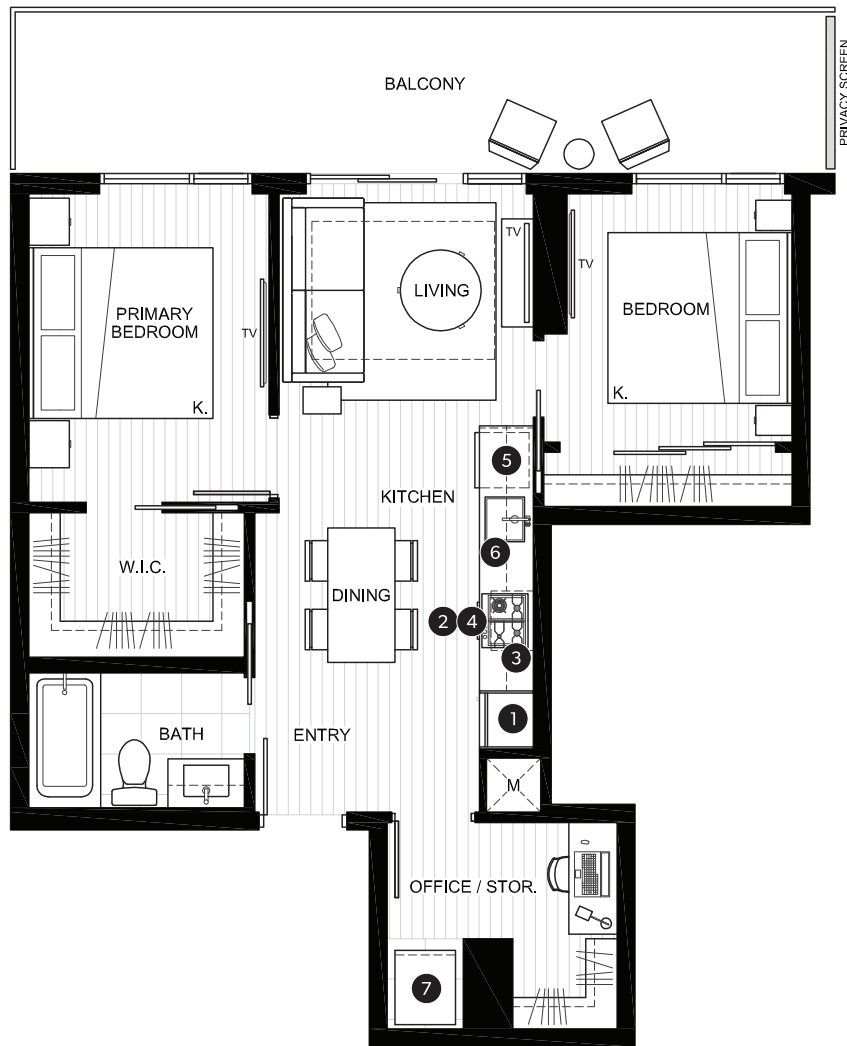
### FEATURE LIST:

- |                                    |                                     |
|------------------------------------|-------------------------------------|
| 1. 24" Integrated Fridge           | 5. Integrated Dishwasher            |
| 2. 24" Bosch Induction Cooktop     | 6. Sink Disposal                    |
| 3. 24" Fulgor Microwave Hood Combo | 7. High-Efficiency Washer and Dryer |
| 4. 24" Fulgor Convention Wall Oven |                                     |

The developer reserves the right to make minor modifications to suite and furniture layout, specifications and floor plans should they be necessary to maintain the high standards of this community. Square footage are based on preliminary measurements and are approximate. E & O.E.

## JR 2 BEDROOM & OFFICE SUITE

INDOOR AREA <b>667 SQ FT</b>	OUTDOOR AREA <b>180 SQ FT</b>
TOTAL AREA <b>847 SQ FT</b>	



### FEATURE LIST:

1. 24" Integrated Fridge
2. 24" Bosch Induction Cooktop
3. 24" Fulgor Microwave Hood Combo
4. 24" Fulgor Convention Wall Oven
5. Integrated Dishwasher
6. Sink Disposal
7. High-Efficiency Washer and Dryer

The developer reserves the right to make minor modifications to suite and furniture layout, specifications and floor plans should they be necessary to maintain the high standards of this community. Square footage are based on preliminary measurements and are approximate. E & O.E.

## 2 BEDROOM SUITE

INDOOR AREA <b>797 SQ FT</b>	OUTDOOR AREA <b>170 SQ FT</b>
TOTAL AREA <b>967 SQ FT</b>	



### FEATURE LIST:

- |                                    |                                     |
|------------------------------------|-------------------------------------|
| 1. 24" Integrated Fridge           | 5. Integrated Dishwasher            |
| 2. 24" Bosch Induction Cooktop     | 6. Sink Disposal                    |
| 3. 24" Fulgor Microwave Hood Combo | 7. High-Efficiency Washer and Dryer |
| 4. 24" Fulgor Convention Wall Oven |                                     |

The developer reserves the right to make minor modifications to suite and furniture layout, specifications and floor plans should they be necessary to maintain the high standards of this community. Square footage are based on preliminary measurements and are approximate. E & O.E.

## 2 BEDROOM SUITE

INDOOR AREA <b>937 SQ FT</b>	OUTDOOR AREA <b>115 - 180 SQ FT</b>
TOTAL AREA <b>1,052 - 1,117 SQ FT</b>	



### FEATURE LIST:

- |                                    |                                     |
|------------------------------------|-------------------------------------|
| 1. 24" Integrated Fridge           | 5. Integrated Dishwasher            |
| 2. 24" Bosch Induction Cooktop     | 6. Sink Disposal                    |
| 3. 24" Fulgor Microwave Hood Combo | 7. High-Efficiency Washer and Dryer |
| 4. 24" Fulgor Convention Wall Oven |                                     |

The developer reserves the right to make minor modifications to suite and furniture layout, specifications and floor plans should they be necessary to maintain the high standards of this community. Square footage are based on preliminary measurements and are approximate. E & O.E.